

## GENERAL SUMMARY

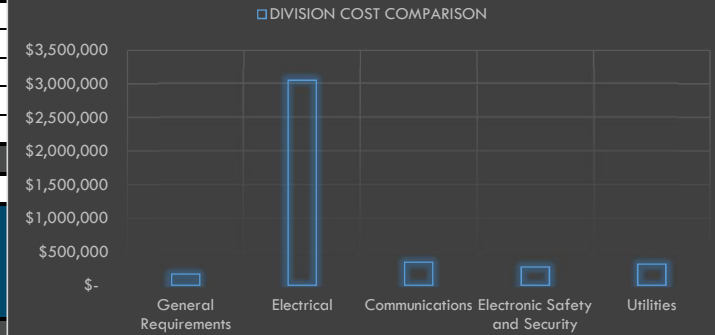
**Prepared for:** Homewood Suites Hotel, 396 SW 42nd Ave In Miami, Florida  
**Project ID:** 16052024  
**Scope:** Electrical  
**No. Of Floors:** 10  
**Date:** 22-May-24



**BUILDING GSF** 144,452

DIVISION NO	DESCRIPTION	TOTAL DIV. COST	TOTAL DIV. COST (PER SF)
1000	General Requirements	\$ 169,000	\$ 1
26000	Electrical	\$ 3,051,666	\$ 21
27000	Communications	\$ 346,192	\$ 2
28000	Electronic Safety and Security	\$ 273,967	\$ 2
33000	Utilities	\$ 314,572	\$ 2
<b>TOTAL TRADE COST</b>		<b>\$ 4,155,397</b>	<b>\$ 29</b>
<b>OVERHEAD AND PROFIT</b>			
	15%	\$ 623,310	\$ 4.31
INSURANCE	3%	\$ 124,662	\$ 1
CONTINGENCY	5%	\$ 207,770	\$ 1
TAX	7%	\$ 215,361	\$ 2
<b>SUGGESTED BID</b>		<b>\$ 5,326,499</b>	<b>\$ 37</b>

### DIVISION COST COMPARISON



**DETAILED BREAKDOWN OF ITEMS**

Prepared for: **Homewood Suites Hotel, 396 SW 42nd Ave In Miami, Florida**  
 Project ID: **16052024**  
 Scope: **Electrical**



Date: **22-May-24**

SR #	Drawing #	Detail #	DESCRIPTION	UNIT	QUANTITY	WASTAGE	QUANTITY W/ WASTAGE	UNIT MANHOUR	HOURLY WAGE	LABOR COST	MAT. COST	UNIT COST	SUB COST
<b>GENERAL REQUIREMENTS</b>													
1			Permits	LS	1	0%	1	0.000	\$ -	\$ -	\$ -	\$ -	\$ -
2			Supervision and Coordination	LS	1	0%	1	0.000	\$ -	\$ -	\$ -	\$ 55,000.00	\$ 55,000.00
3			Submittals and Shop drawings	LS	1	0%	1	0.000	\$ -	\$ -	\$ -	\$ -	\$ -
4			Final Cleaning	LS	1	0%	1	0.000	\$ -	\$ -	\$ -	\$ 7,000.00	\$ 7,000.00
5			Mobilization Costs	LS	1	0%	1	0.000	\$ -	\$ -	\$ -	\$ 82,000.00	\$ 82,000.00
6			Temporary Control & Facilities	LS	1	0%	1	0.000	\$ -	\$ -	\$ -	\$ 25,000.00	\$ 25,000.00
7			Scaffolding	LS	1	0%	1	0.000	\$ -	\$ -	\$ -	\$ -	\$ -
												<b>SUBTOTAL \$</b>	<b>169,000</b>
<b>ELECTRICAL</b>													
<b>DISTRIBUTION</b>													
<b>CONDUIT</b>													
8			2" EMT Conduit	LF	10257	10%	11283	0.100	\$ 38.00	\$ 3.80	\$ 8.67	\$ 12.47	\$ 140,695
9			3" EMT Conduit	LF	106	10%	117	0.160	\$ 38.00	\$ 6.08	\$ 14.07	\$ 20.15	\$ 2,349
10			4" EMT Conduit	LF	6010	10%	6611	0.200	\$ 38.00	\$ 7.60	\$ 19.23	\$ 26.83	\$ 177,373
<b>CONDUCTOR</b>													
11			#6 CU THHN/THWN	LF	10257	10%	11283	0.010	\$ 38.00	\$ 0.38	\$ 0.86	\$ 1.24	\$ 13,991
12			#4 CU THHN/THWN	LF	106	10%	117	0.011	\$ 38.00	\$ 0.42	\$ 1.32	\$ 1.74	\$ 203
13			#3 CU THHN/THWN	LF	1022	10%	1124	0.012	\$ 38.00	\$ 0.46	\$ 1.66	\$ 2.12	\$ 2,379
14			#1 CU THHN/THWN	LF	41027	10%	45130	0.014	\$ 38.00	\$ 0.53	\$ 2.26	\$ 2.79	\$ 126,002
15			#1/0 CU THHN/THWN	LF	4988	10%	5487	0.015	\$ 38.00	\$ 0.57	\$ 2.77	\$ 3.34	\$ 18,326
16			#250 KCMIL CU THHN/THWN	LF	426	10%	469	0.025	\$ 38.00	\$ 0.95	\$ 6.22	\$ 7.17	\$ 3,360
17			#350 KCMIL CU THHN/THWN	LF	3191	10%	3510	0.030	\$ 38.00	\$ 1.14	\$ 8.75	\$ 9.89	\$ 34,715
18			#600 KCMIL CU THHN/THWN	LF	20849	10%	22934	0.040	\$ 38.00	\$ 1.52	\$ 15.65	\$ 17.17	\$ 393,775
<b>LUGS</b>													
19			Compression Lug CU With 1-Hole , #6 CU Wire	EA	248	0%	248	0.400	\$ 38.00	\$ 15.20	\$ 2.94	\$ 18.14	\$ 4,499
			Heat Shrink Tubing for #6 CU Wire	EA	248	0%	248	0.220	\$ 38.00	\$ 8.36	\$ 0.21	\$ 8.57	\$ 2,125
20			Compression Lug CU With 1-Hole , #4 CU Wire	EA	2	0%	2	0.400	\$ 38.00	\$ 15.20	\$ 2.98	\$ 18.18	\$ 36
			Heat Shrink Tubing for #4 CU Wire	EA	2	0%	2	0.220	\$ 38.00	\$ 8.36	\$ 0.23	\$ 8.59	\$ 17
21			Compression Lug CU With 1-Hole , #3 CU Wire	EA	24	0%	24	0.420	\$ 38.00	\$ 15.96	\$ 3.10	\$ 19.06	\$ 457
			Heat Shrink Tubing for #3 CU Wire	EA	24	0%	24	0.220	\$ 38.00	\$ 8.36	\$ 0.25	\$ 8.61	\$ 207
22			Compression Lug CU With 1-Hole , #1 CU Wire	EA	992	0%	992	0.420	\$ 38.00	\$ 15.96	\$ 3.50	\$ 19.46	\$ 19,304
			Heat Shrink Tubing for #1 CU Wire	EA	992	0%	992	0.220	\$ 38.00	\$ 8.36	\$ 0.25	\$ 8.61	\$ 8,541
23			Compression Lug CU With 1-Hole , #1/0 CU Wire	EA	92	0%	92	0.430	\$ 38.00	\$ 16.34	\$ 4.59	\$ 20.93	\$ 1,926
			Heat Shrink Tubing for #1/0 CU Wire	EA	92	0%	92	0.230	\$ 38.00	\$ 8.74	\$ 0.28	\$ 9.02	\$ 830
24			Compression Lug CU With 1-Hole , #250 KCMIL CU Wire	EA	8	0%	8	0.450	\$ 38.00	\$ 17.10	\$ 11.56	\$ 28.66	\$ 229
			Heat Shrink Tubing for #250 KCMIL CU Wire	EA	8	0%	8	0.250	\$ 38.00	\$ 9.50	\$ 0.34	\$ 9.84	\$ 79
25			Compression Lug CU With 1-Hole , #350 KCMIL CU Wire	EA	80	0%	80	0.420	\$ 38.00	\$ 15.96	\$ 8.59	\$ 24.55	\$ 1,964
			Heat Shrink Tubing for #350 KCMIL CU Wire	EA	80	0%	80	0.230	\$ 38.00	\$ 8.74	\$ 0.28	\$ 9.02	\$ 722
26			Compression Lug CU With 1-Hole , #600 KCMIL CU Wire	EA	384	0%	384	0.480	\$ 38.00	\$ 18.24	\$ 14.87	\$ 33.11	\$ 12,714
			Heat Shrink Tubing for #600 KCMIL CU Wire	EA	384	0%	384	0.250	\$ 38.00	\$ 9.50	\$ 0.36	\$ 9.86	\$ 3,786
<b>CIRCUIT BREAKER</b>													
27			1P/15A Breaker	EA	5	0%	5	0.420	\$ 38.00	\$ 15.96	\$ 28.00	\$ 43.96	\$ 220
28			1P/20A Breaker	EA	149	0%	149	0.420	\$ 38.00	\$ 15.96	\$ 33.00	\$ 48.96	\$ 7,295
29			1P/20A AFCI Breaker	EA	490	0%	490	0.420	\$ 38.00	\$ 15.96	\$ 43.00	\$ 58.96	\$ 28,890
30			1P/20A AFCI/GFCI Breaker	EA	340	0%	340	0.420	\$ 38.00	\$ 15.96	\$ 43.00	\$ 58.96	\$ 20,046
31			1P/20A AFCI/GFCI Dual Circuit Breaker	EA	58	0%	58	0.420	\$ 38.00	\$ 15.96	\$ 43.00	\$ 58.96	\$ 3,420
32			2P/15A Breaker	EA	98	0%	98	0.450	\$ 38.00	\$ 17.10	\$ 37.00	\$ 54.10	\$ 5,302

**DETAILED BREAKDOWN OF ITEMS**

Prepared for: **Homewood Suites Hotel, 396 SW 42nd Ave In Miami, Florida**  
 Project ID: **16052024**  
 Scope: **Electrical**



Date: **22-May-24**

SR #	Drawing #	Detail #	DESCRIPTION	UNIT	QUANTITY	WASTAGE	QUANTITY W/ WASTAGE	UNIT MANHOUR	HOURLY WAGE	LABOR COST	MAT. COST	UNIT COST	SUB COST
33			2P/20A Breaker	EA	4	0%	4	0.450	\$ 38.00	\$ 17.10	\$ 43.18	\$ 60.28	\$ 241
34			2P/25A Breaker	EA	10	0%	10	0.450	\$ 38.00	\$ 17.10	\$ 46.00	\$ 63.10	\$ 631
35			2P/30A Breaker	EA	6	0%	6	0.480	\$ 38.00	\$ 18.24	\$ 59.00	\$ 77.24	\$ 463
36			2P/35A Breaker	EA	10	0%	10	0.490	\$ 38.00	\$ 18.62	\$ 63.00	\$ 81.62	\$ 816
37			2P/40A Breaker	EA	1	0%	1	0.500	\$ 38.00	\$ 19.00	\$ 67.91	\$ 86.91	\$ 87
38			2P/45A Breaker	EA	1	0%	1	0.510	\$ 38.00	\$ 19.38	\$ 70.00	\$ 89.38	\$ 89
39			2P/50A Breaker	EA	103	0%	103	0.520	\$ 38.00	\$ 19.76	\$ 72.00	\$ 91.76	\$ 9,451
40			2P/60A Breaker	EA	7	0%	7	0.550	\$ 38.00	\$ 20.90	\$ 78.00	\$ 98.90	\$ 692
41			2P/80 Breaker	EA	7	0%	7	0.610	\$ 38.00	\$ 23.18	\$ 91.00	\$ 114.18	\$ 799
42			2P/125A Electronic Type With Adjustable Trip Breaker	EA	4	0%	4	0.970	\$ 38.00	\$ 36.86	\$ 287.00	\$ 323.86	\$ 1,295
43			2P/125A GFCI Breaker	EA	124	0%	124	0.970	\$ 38.00	\$ 36.86	\$ 297.00	\$ 333.86	\$ 41,399
44			3P/20A Breaker	EA	20	0%	20	0.510	\$ 38.00	\$ 19.38	\$ 58.00	\$ 77.38	\$ 1,548
45			3P/30A Breaker	EA	1	0%	1	0.550	\$ 38.00	\$ 20.90	\$ 85.00	\$ 105.90	\$ 106
46			3P/40A Breaker	EA	3	0%	3	0.590	\$ 38.00	\$ 22.42	\$ 91.80	\$ 114.22	\$ 343
47			3P/40A Breaker	EA	1	0%	1	0.590	\$ 38.00	\$ 22.42	\$ 91.80	\$ 114.22	\$ 114
48			3P/50A Breaker	EA	1	0%	1	0.630	\$ 38.00	\$ 23.94	\$ 94.00	\$ 117.94	\$ 118
49			3P/100A Breaker	EA	2	0%	2	0.980	\$ 38.00	\$ 37.24	\$ 320.00	\$ 357.24	\$ 714
50			3P/100A Electronic Type With Adjustable Trip Breaker	EA	1	0%	1	0.980	\$ 38.00	\$ 37.24	\$ 330.00	\$ 367.24	\$ 367
51			3P/150A Electronic Type With Adjustable Trip Breaker	EA	1	0%	1	1.400	\$ 38.00	\$ 53.20	\$ 534.00	\$ 587.20	\$ 587
52			3P/250A Breaker	EA	1	0%	1	1.830	\$ 38.00	\$ 69.54	\$ 844.00	\$ 913.54	\$ 914
53			3P/400A Breaker	EA	4	0%	4	2.330	\$ 38.00	\$ 88.54	\$ 1,630.00	\$ 1,718.54	\$ 6,874
54			3P/600A Breaker	EA	2	0%	2	3.110	\$ 38.00	\$ 118.18	\$ 3,700.00	\$ 3,818.18	\$ 7,636
55			3P/400A Electronic Type With Adjustable Trip Breaker	EA	6	0%	6	2.330	\$ 38.00	\$ 88.54	\$ 1,660.00	\$ 1,748.54	\$ 10,491
56			3P/800A Electronic Type With Adjustable Trip Breaker	EA	9	0%	9	3.590	\$ 38.00	\$ 136.42	\$ 4,800.00	\$ 4,936.42	\$ 44,428
57			3P/800A MCB	EA	1	0%	1	3.590	\$ 38.00	\$ 136.42	\$ 5,800.00	\$ 5,936.42	\$ 5,936
58			3P/1600A MCB Breaker	EA	1	0%	1	4.800	\$ 38.00	\$ 182.40	\$ 7,190.00	\$ 7,372.40	\$ 7,372
59			3P/4000A MCB (Main 1/2)-With DAS	EA	1	0%	1	15.700	\$ 38.00	\$ 596.60	\$ 23,907.00	\$ 24,503.60	\$ 24,504
60			3P/4000A MCB (Main 2/2)-With DAS	EA	1	0%	1	15.700	\$ 38.00	\$ 596.60	\$ 23,907.00	\$ 24,503.60	\$ 24,504
			<b>PANEL</b>										
61		<b>Provided By Others</b>	Panel P: 400A, 120/208V, 3Ph, 4W, Mains: MLO, NEMA 4X	EA	1	0%	1	6.620	\$ 38.00	\$ 251.56	\$ -	\$ 251.56	\$ 252
62			Panel: CO/NO2 Control Panel	EA	1	0%	1	3.890	\$ 38.00	\$ 147.82	\$ -	\$ 147.82	\$ 148
63			Panel K1: 150A, 120/208V, 1Ph, 3W, Mains: MLO, 30 Poles, Flush Mounted, SIEMENS	EA	49	0%	49	4.200	\$ 38.00	\$ 159.60	\$ 3,846.60	\$ 4,006.20	\$ 196,304
64			Panel K2: 150A, 120/208V, 1Ph, 3W, Mains: MLO, 30 Poles, Flush Mounted, SIEMENS	EA	31	0%	31	4.200	\$ 38.00	\$ 159.60	\$ 3,846.60	\$ 4,006.20	\$ 124,192
65			Panel K3: 150A, 120/208V, 1Ph, 3W, Mains: MLO, 30 Poles, Flush Mounted, SIEMENS	EA	4	0%	4	4.200	\$ 38.00	\$ 159.60	\$ 3,846.60	\$ 4,006.20	\$ 16,025
66			Panel K4: 150A, 120/208V, 1Ph, 3W, Mains: MLO, 30 Poles, Flush Mounted, SIEMENS	EA	1	0%	1	4.200	\$ 38.00	\$ 159.60	\$ 3,846.60	\$ 4,006.20	\$ 4,006
67			Panel Q1: 150A, 120/208V, 1Ph, 3W, Mains: MLO, 30 Poles, Flush Mounted, SIEMENS	EA	4	0%	4	4.200	\$ 38.00	\$ 159.60	\$ 3,846.60	\$ 4,006.20	\$ 16,025
68			Panel Q2: 150A, 120/208V, 1Ph, 3W, Mains: MLO, 30 Poles, Flush Mounted, SIEMENS	EA	8	0%	8	4.200	\$ 38.00	\$ 159.60	\$ 3,846.60	\$ 4,006.20	\$ 32,050
69			Panel Q3: 150A, 120/208V, 1Ph, 3W, Mains: MLO, 30 Poles, Flush Mounted, SIEMENS	EA	1	0%	1	4.200	\$ 38.00	\$ 159.60	\$ 3,846.60	\$ 4,006.20	\$ 4,006
70			Panel 4N: 800A, 120/208V, 3Ph, 4W, Mains: MLO, 52P, SIEMENS, Surface Mounted	EA	1	0%	1	9.350	\$ 38.00	\$ 355.30	\$ 8,245.00	\$ 8,600.30	\$ 8,600
71			Panel 5N: 800A, 120/208V, 3Ph, 4W, Mains: MLO, 54P, SIEMENS, Surface Mounted	EA	1	0%	1	9.350	\$ 38.00	\$ 355.30	\$ 8,245.00	\$ 8,600.30	\$ 8,600

**DETAILED BREAKDOWN OF ITEMS**

Prepared for: **Homewood Suites Hotel, 396 SW 42nd Ave In Miami, Florida**  
 Project ID: **16052024**  
 Scope: **Electrical**



Date: **22-May-24**

SR #	Drawing #	Detail #	DESCRIPTION	UNIT	QUANTITY	WASTAGE	QUANTITY W/ WASTAGE	UNIT MANHOUR	HOURLY WAGE	LABOR COST	MAT. COST	UNIT COST	SUB COST
72			Panel 6N: 800A, 120/208V, 3Ph, 4W, Mains: MLO, 65KAIC, 42P, SIEMENS, Surface Mounted	EA	1	0%	1	9.350	\$ 38.00	\$ 355.30	\$ 8,245.00	\$ 8,600.30	\$ 8,600
73			Panel 7N: 800A, 120/208V, 3Ph, 4W, Mains: MLO, 65KAIC, 42P, SIEMENS, Surface Mounted	EA	1	0%	1	9.350	\$ 38.00	\$ 355.30	\$ 8,245.00	\$ 8,600.30	\$ 8,600
74			Panel 8N: 800A, 120/208V, 3Ph, 4W, Mains: MLO, 65KAIC, 42P, SIEMENS, Surface Mounted	EA	1	0%	1	9.350	\$ 38.00	\$ 355.30	\$ 8,245.00	\$ 8,600.30	\$ 8,600
75			Panel 9N: 800A, 120/208V, 3Ph, 4W, Mains: MLO, 65KAIC, 42P, SIEMENS, Surface Mounted	EA	1	0%	1	9.350	\$ 38.00	\$ 355.30	\$ 8,245.00	\$ 8,600.30	\$ 8,600
76			Panel 10N: 800A, 120/208V, 3Ph, 4W, Mains: MLO, 65KAIC, 42P, SIEMENS, Surface Mounted	EA	1	0%	1	9.350	\$ 38.00	\$ 355.30	\$ 8,245.00	\$ 8,600.30	\$ 8,600
77			Panel EL1: 400A, 120/208V, 3Ph, 4W, Mains: MLO, 42P, SIEMENS, Surface Mounted	EA	1	0%	1	6.620	\$ 38.00	\$ 251.56	\$ 5,470.00	\$ 5,721.56	\$ 5,722
78			Panel EL2: 400A, 120/208V, 3Ph, 4W, Mains: MLO, 42P, SIEMENS, Surface Mounted	EA	1	0%	1	6.620	\$ 38.00	\$ 251.56	\$ 5,470.00	\$ 5,721.56	\$ 5,722
79			Panel EV: 800A, 120/208V, 3Ph, 4W, Mains: MCB, 42P, SIEMENS, Mounting: Free Standing	EA	1	0%	1	9.350	\$ 38.00	\$ 355.30	\$ 8,245.00	\$ 8,600.30	\$ 8,600
80			Panel F: 400A, 120/208V, 3Ph, 4W, Mains: MLO, 42P, SIEMENS, Surface Mounted	EA	1	0%	1	6.620	\$ 38.00	\$ 251.56	\$ 5,470.00	\$ 5,721.56	\$ 5,722
81			Panel IT: 250A, 120/208V, 3Ph, 4W, Mains: MLO, 65KAIC, 30P, SIEMENS, Surface Mounted	EA	1	0%	1	4.890	\$ 38.00	\$ 185.82	\$ 4,215.00	\$ 4,400.82	\$ 4,401
82			Panel K: 400A, 120/208V, 3Ph, 4W, Mains: MLO, 42P, SIEMENS, Surface Mounted	EA	1	0%	1	6.620	\$ 38.00	\$ 251.56	\$ 5,470.00	\$ 5,721.56	\$ 5,722
83			Panel MDP1: 4000A, 120/208V, 3PH, 4W, Mains: MCB, 20P, SIEMENS, Freestanding-Service Rated Mounted	EA	1	0%	1	14.560	\$ 38.00	\$ 553.28	\$ 14,560.00	\$ 15,113.28	\$ 15,113
84			Panel MDP2: 4000A, 120/208V, 3PH, 4W, Mains: MCB, 20P, SIEMENS, Freestanding-Service Rated Mounted	EA	1	0%	1	14.560	\$ 38.00	\$ 553.28	\$ 14,560.00	\$ 15,113.28	\$ 15,113
85			Panel N1/2: 400A, 120/208V, 3Ph, 4W, Mains: MLO, 42P, SIEMENS, Surface Mounted	EA	1	0%	1	6.620	\$ 38.00	\$ 251.56	\$ 5,470.00	\$ 5,721.56	\$ 5,722
86			Panel N2/2: 400A, 120/208V, 3Ph, 4W, Mains: MLO, 42P, SIEMENS, Surface Mounted	EA	1	0%	1	6.620	\$ 38.00	\$ 251.56	\$ 5,470.00	\$ 5,721.56	\$ 5,722
87			Panel NR: 400A, 120/208V, 3Ph, 4W, Mains: MLO, 84P, SIEMENS, Surface Mounted, (Section 1 & 2)	EA	1	0%	1	6.620	\$ 38.00	\$ 251.56	\$ 5,470.00	\$ 5,721.56	\$ 5,722
88			Panel SBG1: 400A, 120/208V, 3Ph, 4W, Mains: MLO, 42P, SIEMENS, Surface Mounted	EA	1	0%	1	6.620	\$ 38.00	\$ 251.56	\$ 5,470.00	\$ 5,721.56	\$ 5,722
89			Panel SBG: 1600A, 120/208V, 3Ph, 4W, Mains: MLO, 42P, SIEMENS, Surface Mounted	EA	1	0%	1	12.650	\$ 38.00	\$ 480.70	\$ 10,856.00	\$ 11,336.70	\$ 11,337
90			Panel SBR: 600A, 120/208V, 3Ph, 4W, Mains: MLO, 42P, SIEMENS, Surface Mounted	EA	1	0%	1	8.120	\$ 38.00	\$ 308.56	\$ 7,256.00	\$ 7,564.56	\$ 7,565
			<b>DEVICES</b>										
91		<b>Provided By Fire Pump Contractor</b>	150HP Jockey Fire Pump Controller With Soft Starter	EA	1	0%	1	7.320	\$ 38.00	\$ 278.16	\$ 6,462.00	\$ 6,740.16	\$ 6,740
			2" Concrete Envelope	EA	1	0%	1	1.560	\$ 38.00	\$ 59.28	\$ 78.87	\$ 138.15	\$ 138
92			3P/1600A, 120/208V, 3Ph Automatic Transfer Switch, NEMA 3R	EA	1	0%	1	10.450	\$ 38.00	\$ 397.10	\$ 12,252.00	\$ 12,649.10	\$ 12,649
93			3P/400A, 120/208V, 3Ph Automatic Transfer Switch, NEMA 3R	EA	1	0%	1	5.140	\$ 38.00	\$ 195.32	\$ 4,606.00	\$ 4,801.32	\$ 4,801
94			3P/400A, 120/208V, 3Ph Manual Transfer Switch, NEMA 3R	EA	1	0%	1	5.140	\$ 38.00	\$ 195.32	\$ 4,606.00	\$ 4,801.32	\$ 4,801
95			3P/600A, 120/208V Manual Transfer Switch, NEMA 3R	EA	1	0%	1	7.110	\$ 38.00	\$ 270.18	\$ 6,896.00	\$ 7,166.18	\$ 7,166
96			750KVA, 120/208V, 3Ph, 4W Stand-By Diesel Generator, MTU12V1600 DS600	EA	1	0%	1	128.690	\$ 38.00	\$ 4,890.22	\$ 229,000.00	\$ 233,890.22	\$ 233,890
97			ATS Remote Annunciator Panel	EA	1	0%	1	4.230	\$ 38.00	\$ 160.74	\$ 1,299.99	\$ 1,460.73	\$ 1,461
98			Concrete Pad	EA	1	0%	1	4.500	\$ 38.00	\$ 171.00	\$ 650.00	\$ 821.00	\$ 821
99		<b>Detail Not Given</b>	EPO	EA	3	0%	3	3.120	\$ 38.00	\$ 118.56	\$ 1,002.04	\$ 1,120.60	\$ 3,362
100			Generator Annunciator Panel	EA	1	0%	1	5.440	\$ 38.00	\$ 206.72	\$ 1,645.00	\$ 1,851.72	\$ 1,852
101			Generator/ATS Fire Alarm Monitor Device	EA	1	0%	1	1.780	\$ 38.00	\$ 67.64	\$ 267.32	\$ 334.96	\$ 335

**DETAILED BREAKDOWN OF ITEMS**

Prepared for: **Homewood Suites Hotel, 396 SW 42nd Ave In Miami, Florida**  
 Project ID: **16052024**  
 Scope: **Electrical**



Date: **22-May-24**

SR #	Drawing #	Detail #	DESCRIPTION	UNIT	QUANTITY	WASTAGE	QUANTITY W/ WASTAGE	UNIT MANHOUR	HOURLY WAGE	LABOR COST	MAT. COST	UNIT COST	SUB COST	
102	E102, E103, E104, E105, E106, E107, E111, E201, E202, E203, E204, E205, E206, E302, E303, E306, E401, E402, E403, E404, E405, E406, E407 & E500		House Keeping Concrete Pad	EA	2	0%	2	3.350	\$ 38.00	\$ 127.30	\$ 560.00	\$ 687.30	\$ 1,375	
103		<b>Provided By Fire Pump Contractor</b>	Service Rated Fire Pump ATS	EA	1	0%	1	7.630	\$ 38.00	\$ 289.94	\$ 7,599.95	\$ 7,889.89	\$ 7,890	
104			Temporary Generator Docking Station, NEMA 3R	EA	1	0%	1	6.380	\$ 38.00	\$ 242.44	\$ 6,601.32	\$ 6,843.76	\$ 6,844	
105			Surge Protection Device	EA	121	0%	121	0.650	\$ 38.00	\$ 24.70	\$ 259.99	\$ 284.69	\$ 34.447	
				<b>DISCONNECT SWITCH</b>										
106			<b>Rating Assumed</b>	1P/20A Fused Disconnect Switch, WP, NEMA 1	EA	6	0%	6	0.430	\$ 38.00	\$ 16.34	\$ 67.12	\$ 83.46	\$ 501
107			<b>Rating Assumed</b>	2P/15A Disconnect Switch, NEMA 1	EA	71	0%	71	0.460	\$ 38.00	\$ 17.48	\$ 82.56	\$ 100.04	\$ 7,103
108			<b>From Panel</b>	2P/15A Disconnect Switch, WP, NEMA 1	EA	1	0%	1	0.460	\$ 38.00	\$ 17.48	\$ 88.30	\$ 105.78	\$ 106
109				2P/20A Disconnect Switch, NEMA 1	EA	1	0%	1	0.490	\$ 38.00	\$ 18.62	\$ 98.22	\$ 116.84	\$ 117
110			<b>Rating Assumed</b>	2P/20A Disconnect Switch, NEMA 1	EA	1	0%	1	0.490	\$ 38.00	\$ 18.62	\$ 98.22	\$ 116.84	\$ 117
111				2P/20A Disconnect Switch, WP, NEMA 1	EA	1	0%	1	0.490	\$ 38.00	\$ 18.62	\$ 110.00	\$ 128.62	\$ 129
112			<b>Rating Assumed</b>	2P/20A Disconnect Switch, WP, NEMA 1	EA	1	0%	1	0.490	\$ 38.00	\$ 18.62	\$ 110.00	\$ 128.62	\$ 129
113				2P/25A Disconnect Switch, NEMA 1	EA	9	0%	9	0.530	\$ 38.00	\$ 20.14	\$ 122.34	\$ 142.48	\$ 1,282
114				2P/25A Disconnect Switch, WP, NEMA 3R	EA	2	0%	2	0.530	\$ 38.00	\$ 20.14	\$ 134.65	\$ 154.79	\$ 310
115				2P/30A Disconnect Switch, NEMA 1	EA	2	0%	2	0.560	\$ 38.00	\$ 21.28	\$ 148.56	\$ 169.84	\$ 340
116				2P/30A Disconnect Switch, WP, NEMA 1	EA	1	0%	1	0.560	\$ 38.00	\$ 21.28	\$ 156.89	\$ 178.17	\$ 178
117				2P/35A Disconnect Switch, NEMA 1	EA	6	0%	6	0.590	\$ 38.00	\$ 22.42	\$ 167.99	\$ 190.41	\$ 1,142
118				2P/35A Disconnect Switch, WP, NEMA 3R	EA	3	0%	3	0.590	\$ 38.00	\$ 22.42	\$ 179.00	\$ 201.42	\$ 604
119			<b>Rating Assumed</b>	2P/40A Disconnect Switch, WP, NEMA 3R	EA	1	0%	1	0.640	\$ 38.00	\$ 24.32	\$ 196.23	\$ 220.55	\$ 221
120			<b>From Panel</b>	2P/45A Disconnect Switch, WP, NEMA 1	EA	1	0%	1	0.680	\$ 38.00	\$ 25.84	\$ 223.14	\$ 248.98	\$ 249
121				2P/50A Disconnect Switch, WP, NEMA 3R	EA	5	0%	5	0.710	\$ 38.00	\$ 26.98	\$ 239.41	\$ 266.39	\$ 1,332
122				2P/60A Disconnect Switch, NEMA 1	EA	9	0%	9	0.740	\$ 38.00	\$ 28.12	\$ 248.50	\$ 276.62	\$ 2,490
123				2P/60A Disconnect Switch, WP, NEMA 3R	EA	1	0%	1	0.740	\$ 38.00	\$ 28.12	\$ 258.00	\$ 286.12	\$ 286
124				3P/100A Disconnect Switch, WP, NEMA 3R	EA	2	0%	2	1.220	\$ 38.00	\$ 46.36	\$ 756.00	\$ 802.36	\$ 1,605
125				3P/100AF/100AT Disconnect Switch, WP, NEMA 1	EA	1	0%	1	1.220	\$ 38.00	\$ 46.36	\$ 756.00	\$ 802.36	\$ 802
126				3P/20A Disconnect Switch, NEMA 1	EA	3	0%	3	0.530	\$ 38.00	\$ 20.14	\$ 92.30	\$ 112.44	\$ 337
127			<b>Rating Assumed</b>	3P/20A Disconnect Switch, NEMA 1	EA	1	0%	1	0.530	\$ 38.00	\$ 20.14	\$ 92.30	\$ 112.44	\$ 112
128			<b>Rating Assumed</b>	3P/20A Disconnect Switch, WP, NEMA 1	EA	16	0%	16	0.530	\$ 38.00	\$ 20.14	\$ 112.45	\$ 132.59	\$ 2,121
129			<b>From Panel</b>	3P/20A Disconnect Switch, WP, NEMA 1	EA	1	0%	1	0.530	\$ 38.00	\$ 20.14	\$ 112.45	\$ 132.59	\$ 133
130			<b>Rating Assumed</b>	3P/20A Disconnect Switch, WP, NEMA 3R	EA	16	0%	16	0.530	\$ 38.00	\$ 20.14	\$ 112.45	\$ 132.59	\$ 2,121
131			<b>From Panel</b>	3P/30A Disconnect Switch, NEMA 1	EA	1	0%	1	0.580	\$ 38.00	\$ 22.04	\$ 143.74	\$ 165.78	\$ 166
132			<b>Rating Assumed</b>	3P/30A Disconnect Switch, NEMA 1	EA	1	0%	1	0.580	\$ 38.00	\$ 22.04	\$ 143.74	\$ 165.78	\$ 166
133				3P/400AF/350AT Disconnect Switch, WP, NEMA 3R (Rating Assumed)	EA	1	0%	1	2.560	\$ 38.00	\$ 97.28	\$ 1,485.63	\$ 1,582.91	\$ 1,583
134			<b>Rating Assumed</b>	3P/40A Disconnect Switch, WP, NEMA 1	EA	3	0%	3	0.660	\$ 38.00	\$ 25.08	\$ 186.45	\$ 211.53	\$ 635
135			<b>From Panel</b>	3P/40A Disconnect Switch, WP, NEMA 3R	EA	1	0%	1	0.660	\$ 38.00	\$ 25.08	\$ 186.45	\$ 211.53	\$ 212
136				3P/50A Disconnect Switch, WP, NEMA 3R	EA	1	0%	1	0.720	\$ 38.00	\$ 27.36	\$ 236.89	\$ 264.25	\$ 264
				<b>GROUNDING</b>										
137				5/8" x 10' CU Clad Ground Rod	EA	2	0%	2	0.380	\$ 38.00	\$ 14.44	\$ 44.50	\$ 58.94	\$ 118
138				Ground Busbar	EA	4	0%	4	0.860	\$ 38.00	\$ 32.68	\$ 160.50	\$ 193.18	\$ 773
139				1/2" x 20' Concrete Encased Electrode	EA	1	0%	1	0.330	\$ 38.00	\$ 12.54	\$ 33.45	\$ 45.99	\$ 46
140				#6 CU Grounding Conductor	LF	40	10%	44	0.010	\$ 38.00	\$ 0.38	\$ 0.86	\$ 1.24	\$ 55
141				#4 CU Grounding Conductor	LF	20	10%	22	0.011	\$ 38.00	\$ 0.42	\$ 1.32	\$ 1.74	\$ 38
142			3/0 CU Grounding Conductor	LF	215	10%	237	0.017	\$ 38.00	\$ 0.65	\$ 4.31	\$ 4.96	\$ 1,172	
			<b>POWER</b>											
			<b>CONDUIT</b>											
143			1/2" EMT Conduit	LF	43933	10%	48327	0.047	\$ 38.00	\$ 1.79	\$ 1.39	\$ 3.18	\$ 153,486	
144			3/4" EMT Conduit	LF	2871	10%	3158	0.062	\$ 38.00	\$ 2.36	\$ 2.03	\$ 4.39	\$ 13,849	
145			1" EMT Conduit With Pull String	LF	684	10%	752	0.070	\$ 38.00	\$ 2.66	\$ 3.46	\$ 6.12	\$ 4,605	
146			1" EMT Conduit	LF	2247	10%	2471	0.070	\$ 38.00	\$ 2.66	\$ 3.46	\$ 6.12	\$ 15,125	

**DETAILED BREAKDOWN OF ITEMS**

Prepared for: **Homewood Suites Hotel, 396 SW 42nd Ave In Miami, Florida**  
 Project ID: **16052024**  
 Scope: **Electrical**



Date: **22-May-24**

SR #	Drawing #	Detail #	DESCRIPTION	UNIT	QUANTITY	WASTAGE	QUANTITY W/ WASTAGE	UNIT MANHOUR	HOURLY WAGE	LABOR COST	MAT. COST	UNIT COST	SUB COST
147			1-1/4" EMT Conduit	LF	444	10%	488	0.080	\$ 38.00	\$ 3.04	\$ 5.65	\$ 8.69	\$ 4,244
148			1-1/2" EMT Conduit	LF	857	10%	943	0.089	\$ 38.00	\$ 3.38	\$ 7.04	\$ 10.42	\$ 9,825
149			2" EMT Conduit	LF	241	10%	265	0.100	\$ 38.00	\$ 3.80	\$ 8.67	\$ 12.47	\$ 3,306
150			4" EMT Conduit	LF	252	10%	277	0.200	\$ 38.00	\$ 7.60	\$ 19.23	\$ 26.83	\$ 7,437
151			1/2" RGS Conduit	LF	179	10%	197	0.089	\$ 38.00	\$ 3.38	\$ 4.78	\$ 8.16	\$ 1,607
152			3/4" RGS Conduit	LF	36	10%	40	0.100	\$ 38.00	\$ 3.80	\$ 5.00	\$ 8.80	\$ 348
153			1" RGS Conduit	LF	15	10%	17	0.123	\$ 38.00	\$ 4.67	\$ 7.78	\$ 12.45	\$ 205
154			4" RGS Conduit	LF	5	10%	6	0.400	\$ 38.00	\$ 15.20	\$ 49.50	\$ 64.70	\$ 356
			<b>CONDUCTOR</b>										
155			#12 CU THHN/THWN	LF	142349	10%	156584	0.007	\$ 38.00	\$ 0.27	\$ 0.25	\$ 0.52	\$ 80,798
156			#10 CU THHN/THWN	LF	8021	10%	8823	0.008	\$ 38.00	\$ 0.30	\$ 0.38	\$ 0.68	\$ 6,035
157			#8 CU THHN/THWN	LF	5968	10%	6565	0.009	\$ 38.00	\$ 0.34	\$ 0.56	\$ 0.90	\$ 5,921
158			#6 CU THHN/THWN	LF	6888	10%	7577	0.010	\$ 38.00	\$ 0.38	\$ 0.86	\$ 1.24	\$ 9,396
159			#3 CU THHN/THWN	LF	2033	10%	2236	0.012	\$ 38.00	\$ 0.46	\$ 1.66	\$ 2.12	\$ 4,732
160			#2 CU THHN/THWN	LF	3426	10%	3769	0.013	\$ 38.00	\$ 0.49	\$ 2.07	\$ 2.56	\$ 9,663
161			#1/0 CU THHN/THWN	LF	962	10%	1058	0.014	\$ 38.00	\$ 0.53	\$ 2.26	\$ 2.79	\$ 2,954
162			#600 KCMIL CU THHN/THWN	LF	1028	10%	1131	0.040	\$ 38.00	\$ 1.52	\$ 15.65	\$ 17.17	\$ 19,416
			<b>DEVICE</b>										
163			30A Special Purpose Receptacle	EA	5	0%	5	0.380	\$ 38.00	\$ 14.44	\$ 48.00	\$ 62.44	\$ 312
164			50A Special Purpose Receptacle	EA	77	0%	77	0.410	\$ 38.00	\$ 15.58	\$ 52.30	\$ 67.88	\$ 5,227
165			Double Duplex Receptacle	EA	63	0%	63	0.380	\$ 38.00	\$ 14.44	\$ 45.00	\$ 59.44	\$ 3,745
166			Double Duplex Receptacle, GFCI, Above Counter	EA	37	0%	37	0.380	\$ 38.00	\$ 14.44	\$ 47.00	\$ 61.44	\$ 2,273
167			Duplex Receptacle	EA	555	0%	555	0.350	\$ 38.00	\$ 13.30	\$ 35.00	\$ 48.30	\$ 26,807
168			Duplex Receptacle, GFCI	EA	64	0%	64	0.350	\$ 38.00	\$ 13.30	\$ 38.00	\$ 51.30	\$ 3,283
169			Duplex Receptacle, GFCI, WP	EA	56	0%	56	0.350	\$ 38.00	\$ 13.30	\$ 42.00	\$ 55.30	\$ 3,097
170			Duplex Receptacle With USB Port	EA	6	0%	6	0.350	\$ 38.00	\$ 13.30	\$ 35.00	\$ 48.30	\$ 290
171			Duplex Receptacle, GFCI	EA	197	0%	197	0.350	\$ 38.00	\$ 13.30	\$ 38.00	\$ 51.30	\$ 10,106
172			Duplex Receptacle, GFCI, Above Counter	EA	18	0%	18	0.350	\$ 38.00	\$ 13.30	\$ 38.00	\$ 51.30	\$ 923
173			Duplex Receptacle, USB	EA	63	0%	63	0.350	\$ 38.00	\$ 13.30	\$ 35.00	\$ 48.30	\$ 3,043
174			Exhaust Fan Connection	EA	5	0%	5	0.530	\$ 38.00	\$ 20.14	\$ -	\$ 20.14	\$ 101
175			Quad Receptacle	EA	126	0%	126	0.380	\$ 38.00	\$ 14.44	\$ 42.00	\$ 56.44	\$ 7,111
176			Shunt Trip Push Button	EA	2	0%	2	0.350	\$ 38.00	\$ 13.30	\$ 36.00	\$ 49.30	\$ 99
177			Single Pole Switch	EA	264	0%	264	0.285	\$ 38.00	\$ 10.83	\$ 22.50	\$ 33.33	\$ 8,799
178			Single Pole Switch, WP	EA	4	0%	4	0.285	\$ 38.00	\$ 10.83	\$ 26.25	\$ 37.08	\$ 148
179			Single Receptacle	EA	325	0%	325	0.350	\$ 38.00	\$ 13.30	\$ 35.00	\$ 48.30	\$ 15,698
180			Single Receptacle, WP	EA	3	0%	3	0.350	\$ 38.00	\$ 13.30	\$ 42.00	\$ 55.30	\$ 166
181			Thermostat	EA	1	0%	1	1.850	\$ 38.00	\$ 70.30	\$ 250.00	\$ 320.30	\$ 320
			<b>LIGHTING</b>										
			<b>CONDUIT</b>										
182			1/2" EMT Conduit	LF	8341	10%	9175	0.047	\$ 38.00	\$ 1.79	\$ 1.39	\$ 3.18	\$ 29,139
183			3/4" EMT Conduit	LF	6245	10%	6869	0.062	\$ 38.00	\$ 2.36	\$ 2.03	\$ 4.39	\$ 30,129
184			1" EMT Conduit	LF	5464	10%	6010	0.070	\$ 38.00	\$ 2.66	\$ 3.46	\$ 6.12	\$ 36,784
			<b>CONDUCTOR</b>										
185		<b>Length Assumed</b>	#22 CHX-PCBL-3465 PLENUM	LF	960	10%	1056	0.012	\$ 38.00	\$ 0.46	\$ 0.96	\$ 1.42	\$ 1,495
186			#12 CU THHN/THWN	LF	24425	10%	26867	0.007	\$ 38.00	\$ 0.27	\$ 0.25	\$ 0.52	\$ 13,863
187			#10 CU THHN/THWN	LF	17894	10%	19683	0.008	\$ 38.00	\$ 0.30	\$ 0.38	\$ 0.68	\$ 13,463
188			#8 CU THHN/THWN	LF	16392	10%	18031	0.009	\$ 38.00	\$ 0.34	\$ 0.56	\$ 0.90	\$ 16,264
			<b>LIGHTING FIXTURES</b>										
189			14" Dia LED Down Light	EA	100	0%	100	0.850	\$ 38.00	\$ 32.30	\$ 89.90	\$ 122.20	\$ 12,220
190			5" Dia LED Down Light	EA	443	0%	443	0.800	\$ 38.00	\$ 30.40	\$ 64.00	\$ 94.40	\$ 41,819

**DETAILED BREAKDOWN OF ITEMS**

Prepared for: **Homewood Suites Hotel, 396 SW 42nd Ave In Miami, Florida**  
 Project ID: **16052024**  
 Scope: **Electrical**



Date: **22-May-24**

SR #	Drawing #	Detail #	DESCRIPTION	UNIT	QUANTITY	WASTAGE	QUANTITY W/ WASTAGE	UNIT MANHOOUR	HOURLY WAGE	LABOR COST	MAT. COST	UNIT COST	SUB COST
191		<b>Detail/Schedule Not Given</b>	6" Dia LED Down Light	EA	9	0%	9	0.800	\$ 38.00	\$ 30.40	\$ 66.00	\$ 96.40	\$ 868
192	Elevator Pit Light		EA	14	0%	14	0.800	\$ 38.00	\$ 30.40	\$ 44.00	\$ 74.40	\$ 1,042	
193	12" Downlight Fixture		EA	16	0%	16	0.850	\$ 38.00	\$ 32.30	\$ 76.65	\$ 108.95	\$ 1,743	
194	4' LED Light Fixture		EA	36	0%	36	1.320	\$ 38.00	\$ 50.16	\$ 212.50	\$ 262.66	\$ 9,456	
195			A: LITHONIA LIGHTING STAK 2x2 4000LM 90CRI 35K COL MIN10 ZT MVOLT Mounting: Recessed Mounted Watts: 33.3W	EA	3	0%	3	1.350	\$ 38.00	\$ 51.30	\$ 135.26	\$ 186.56	\$ 560
196			A1: Emergency, LITHONIA LIGHTING STAK 2x2 4000LM 90CRI 35	EA	1	0%	1	1.350	\$ 38.00	\$ 51.30	\$ 135.26	\$ 186.56	\$ 187
197			B: LITHONIA LIGHTING STAK 2x2 5000LM 90CRI 35K COL MINI	EA	25	0%	25	1.420	\$ 38.00	\$ 53.96	\$ 149.26	\$ 203.22	\$ 5,081
198			B1: Emergency, LITHONIA LIGHTING STAK 2x2 5000LM 90CRI 35K COL MIN10 ZT MVOLT Mounting: Recessed Mounted Watts: 41.9	EA	15	0%	15	1.420	\$ 38.00	\$ 53.96	\$ 149.26	\$ 203.22	\$ 3,048
199		<b>Detail/Schedule Not Given</b>	Exit Light Wall Mounted	EA	1	0%	1	1.250	\$ 38.00	\$ 47.50	\$ 126.00	\$ 173.50	\$ 174
200			F-CTM1: KUZCO LIGHTING FM43920-WH/WT Mounting: CEILING SURFACE Watts: 41.6	EA	4	0%	4	2.500	\$ 38.00	\$ 95.00	\$ 258.00	\$ 353.00	\$ 1,412
201			F-CTM1E : Emergency, KUZCO LIGHTING FM43920-WH/WT Mounting: CEILING SURFACE Watts: 41.6	EA	8	0%	8	2.500	\$ 38.00	\$ 95.00	\$ 258.00	\$ 353.00	\$ 2,824
202			J: LITHONIA LIGHTING, CSVT L48 5000LM MVOLT 3500K Mounting: Ceiling Surface Watts: 41.9W	EA	14	0%	14	1.400	\$ 38.00	\$ 53.20	\$ 144.82	\$ 198.02	\$ 2,772
203			J1: LED Lighting Fixture, FOCAL POINT LLC FSM2LWLS FL 625LF 35K 1C UNVL11 SM WH XFT Mounted: Surface Mounted Watts: 23.7 W	EA	17	0%	17	1.620	\$ 38.00	\$ 61.56	\$ 166.19	\$ 227.75	\$ 3,872
204			J1E: LED Lighting Fixture With Emergency Battery Backup, FOCAL POINT LLC FSM2LWLS FL 625LF 35K 1C UNVL11 SM WH XFT Mounted: Surface Mounted Watts: 23.7 W	EA	22	0%	22	1.620	\$ 38.00	\$ 61.56	\$ 166.19	\$ 227.75	\$ 5,011
205			JE: LITHONIA LIGHTING, CSVT L48 5000LM MVOLT 3500K 80CRI	EA	28	0%	28	1.450	\$ 38.00	\$ 55.10	\$ 144.82	\$ 199.92	\$ 5,598
206			K: LITHONIA LIGHTING CSVT L48 4000LM MVOLT 30K 80CRI S	EA	6	0%	6	1.300	\$ 38.00	\$ 49.40	\$ 134.82	\$ 184.22	\$ 1,105
207			LF: LED Strip Light Fixture, Surface Or Pendant Mounted Fluorescent	EA	13	0%	13	3.950	\$ 38.00	\$ 150.10	\$ 791.30	\$ 941.40	\$ 12,238
208			M: LITHONIA LIGHTING ZL IN L48 4000LM MVOLT 80CRI 30K V	EA	22	0%	22	1.250	\$ 38.00	\$ 47.50	\$ 128.21	\$ 175.71	\$ 3,866
209			M1: LED Lighting Fixture, LITHONIA LIGHTING ZL IN L48 5000LM FST MVOLT 80CRI 30K WH Mounted: Surface Mounted Watts: 34.31W	EA	12	0%	12	1.350	\$ 38.00	\$ 51.30	\$ 138.41	\$ 189.71	\$ 2,277
210			N: OXYGEN LIGHTING 3 511 24 Mounting: WALL SURFACE Watts: 10.4	EA	119	0%	119	2.620	\$ 38.00	\$ 99.56	\$ 318.40	\$ 417.96	\$ 49,737
211			NE: Emergency OXYGEN LIGHTING 3 511 24 Mounting: WALL SURFACE Watts: 10.4	EA	35	0%	35	2.620	\$ 38.00	\$ 99.56	\$ 318.40	\$ 417.96	\$ 14,629
212		<b>Detail/Schedule Not Given</b>	NL1: 2x 4' LED Lighting Fixture	EA	1	0%	1	3.420	\$ 38.00	\$ 129.96	\$ 470.00	\$ 599.96	\$ 600
213			RA: JUNO LIGHTING JPDZ4 SQDC ALO10 SWW5WD 90CRI JPDZ4RDNCMP 120 FRPC WWH Mounting: Recessed Watts: 15	EA	127	0%	127	0.800	\$ 38.00	\$ 30.40	\$ 62.05	\$ 92.45	\$ 11,741

**DETAILED BREAKDOWN OF ITEMS**

Prepared for: **Homewood Suites Hotel, 396 SW 42nd Ave In Miami, Florida**  
 Project ID: **16052024**  
 Scope: **Electrical**



Date: **22-May-24**

SR #	Drawing #	Detail #	DESCRIPTION	UNIT	QUANTITY	WASTAGE	QUANTITY W/ WASTAGE	UNIT MANHOUR	HOURLY WAGE	LABOR COST	MAT. COST	UNIT COST	SUB COST
214			RA1: Emergency JUNO LIGHTING JPDZ4 SQDC ALO10 SWW5WD 90CRI JPDZ4RDNCMP 120 FRPC WWH Mounting: Recessed Watts: 15	EA	129	0%	129	0.800	\$ 38.00	\$ 30.40	\$ 62.05	\$ 92.45	\$ 11,926
215			RB: JUNO LIGHTING JPDZ4 SQDC ALO10 SWW5WD 90CRI JPDZ4RDNCMP 120 FRPC WWH Mounting: Recessed Watts: 15	EA	4	0%	4	0.800	\$ 38.00	\$ 30.40	\$ 62.05	\$ 92.45	\$ 370
216			RC: JUNO LIGHTING JPDZ4 WW SQDC ALO10 SWW5WD 90CRI JPDZ4RDNCMP 120 FRPC WWH Mounting: Recessed Watts: 15	EA	27	0%	27	0.800	\$ 38.00	\$ 30.40	\$ 62.05	\$ 92.45	\$ 2,496
217			RC1: Emergency JUNO LIGHTING JPDZ4 WW SQDC ALO10 SWW5WD 90CRI JPDZ4RDNCMP 120 FRPC WWH Mounting: Recessed Watts: 15	EA	2	0%	2	0.800	\$ 38.00	\$ 30.40	\$ 62.05	\$ 92.45	\$ 185
218			RE: JUNO LIGHTING JPDZ4 SQDC ALO10 SWW5WD 90CRI JPDZ4RDNCMP 120 FRPC WWH Mounting: Recessed Watts: 15	EA	5	0%	5	0.800	\$ 38.00	\$ 30.40	\$ 62.05	\$ 92.45	\$ 462
219			RE1: Emergency JUNO LIGHTING JPDZ4 SQDC ALO10 SWW5WD 90CRI JPDZ4RDNCMP 120 FRPC WWH Mounting: Recessed Watts: 15	EA	3	0%	3	0.800	\$ 38.00	\$ 30.40	\$ 62.05	\$ 92.45	\$ 277
220			RF1: Emergency FOCAL PAINT. LLC FSM2PR FHX FL2 375LF 30K 1CUNV LD1 TF WH X' Mounting: Recessed Watts: 17.5	EA	6	0%	6	1.350	\$ 38.00	\$ 51.30	\$ 138.00	\$ 189.30	\$ 1,136
221			RG: Lighting Fixture, PINNACLE ARCHITECTURAL LIGHTING, LF44A 835MOGU FSD 10 W Mounting: Recessed Watts: 126.3W	EA	2	0%	2	1.100	\$ 38.00	\$ 41.80	\$ 109.98	\$ 151.78	\$ 304
222			RG1: Lighting Fixture, PINNACLE ARCHITECTURAL LIGHTING, LF44A 835MOGU FSD 10 W Mounting: Recessed Watts: 126.3W	EA	2	0%	2	1.100	\$ 38.00	\$ 41.80	\$ 109.98	\$ 151.78	\$ 304
223			W: Lighting Fixture, LITHONIA LIGHTING, WPX1 LED P2 30K MVOLT DBLXD Mounting, Wall Mounted Watts: 23.26W	EA	3	0%	3	2.880	\$ 38.00	\$ 109.44	\$ 392.00	\$ 501.44	\$ 1,504
224			WE: Lighting Fixture, LITHONIA LIGHTING, WPX1 LED P2 30K MVOLT DBLXD Mounting: Wall Mounted Watts: 23.26W	EA	5	0%	5	2.880	\$ 38.00	\$ 109.44	\$ 392.00	\$ 501.44	\$ 2,507
225			XSDE: Lighting Fixture, TARGETTI, LUC F2 L3 T4 30 BT MG 11.5 BASE COVER (AIM ANGLES PER PHOTOMETRIC PLAN Mounting: Column Watts: 97.24W	EA	2	0%	2	0.800	\$ 38.00	\$ 30.40	\$ 64.52	\$ 94.92	\$ 190
226			Z: Lighting Fixture, Focal Point, LLC, FSM4L FL 625LF 35K 1C UNV L11 GWH XFT Mounting: Recessed Watts: 21.8W	EA	2	0%	2	2.400	\$ 38.00	\$ 91.20	\$ 250.00	\$ 341.20	\$ 682



**DETAILED BREAKDOWN OF ITEMS**

Prepared for: **Homewood Suites Hotel, 396 SW 42nd Ave In Miami, Florida**  
 Project ID: **16052024**  
 Scope: **Electrical**



Date: **22-May-24**

SR #	Drawing #	Detail #	DESCRIPTION	UNIT	QUANTITY	WASTAGE	QUANTITY W/ WASTAGE	UNIT MANHOUR	HOURLY WAGE	LABOR COST	MAT. COST	UNIT COST	SUB COST
227			Z1: Lighting Fixture, Focal Point, LLC, FSM4L FL 625LF 35K 1C UNV L11 GWH XFT Mounting: Recessed Watts: 21.8W	EA	2	0%	2	2.400	\$ 38.00	\$ 91.20	\$ 250.00	\$ 341.20	\$ 682
			<b>LIGHTING CONTROL</b>										
228			Master Switch	EA	77	0%	77	0.600	\$ 38.00	\$ 22.80	\$ 48.75	\$ 71.55	\$ 5,509
229			Relay Panel	EA	27	0%	27	2.620	\$ 38.00	\$ 99.56	\$ 2,368.00	\$ 2,467.56	\$ 66,624
230			Occupancy Sensor	EA	11	0%	11	0.800	\$ 38.00	\$ 30.40	\$ 66.00	\$ 96.40	\$ 1,060
231			Single Pole Switch	EA	424	0%	424	0.250	\$ 38.00	\$ 9.50	\$ 22.00	\$ 31.50	\$ 13,356
232			Single Pole Wall Mounted Occupancy Sensor	EA	25	0%	25	0.250	\$ 38.00	\$ 9.50	\$ 22.00	\$ 31.50	\$ 788
233			Three-Way Toggle Switch	EA	4	0%	4	0.350	\$ 38.00	\$ 13.30	\$ 35.00	\$ 48.30	\$ 193
234			LUTRON CONTROL MODULE, MQSE-2S1-D	EA	1	0%	1	2.620	\$ 38.00	\$ 99.56	\$ 399.00	\$ 498.56	\$ 499
			8"x8"-ENC, LUT-8x8-ENC	EA	1	0%	1	1.350	\$ 38.00	\$ 51.30	\$ 185.00	\$ 236.30	\$ 236
235			SENSOR MODULE, QSM2-XW-C	EA	1	0%	1	1.350	\$ 38.00	\$ 51.30	\$ 195.00	\$ 246.30	\$ 246
			<b>MISCELLANEOUS</b>										
236			Junction Box	EA	212	0%	212	0.400	\$ 38.00	\$ 15.20	\$ 45.00	\$ 60.20	\$ 12,762
237			Junction Box, WP	EA	7	0%	7	0.400	\$ 38.00	\$ 15.20	\$ 45.00	\$ 60.20	\$ 421
												<b>SUBTOTAL</b>	<b>\$ 3,051,666</b>

**COMMUNICATION**

<b>TELECOMMUNICATION</b>													
<b>CONDUIT</b>													
238			3/4" EMT Conduit Upto Ceiling	LF	677	10%	744	0.062	\$ 38.00	\$ 2.36	\$ 2.03	\$ 4.39	\$ 3,264.57
239			1" EMT Conduit	LF	24200	10%	26620	0.070	\$ 38.00	\$ 2.66	\$ 3.46	\$ 6.12	\$ 162,914.40
240			1" EMT Conduit Upto Ceiling	LF	165	10%	182	0.070	\$ 38.00	\$ 2.66	\$ 3.46	\$ 6.12	\$ 1,110.78
241			4" EMT Conduit With Pull String	LF	990	10%	1089	0.200	\$ 38.00	\$ 7.60	\$ 19.23	\$ 26.83	\$ 29,217.87
<b>CONDUCTOR</b>													
242			CAT6 Cable	LF	24955	10%	27451	0.032	\$ 38.00	\$ 1.22	\$ 0.32	\$ 1.54	\$ 42,164.07
243			Coaxial Cable	LF	15652	10%	17218	0.052	\$ 38.00	\$ 1.98	\$ 0.52	\$ 2.50	\$ 42,975.42
<b>J-HOOKS</b>													
244			2" J-Hooks	EA	478	0%	478	0.080	\$ 38.00	\$ 3.04	\$ 1.53	\$ 4.57	\$ 2,185.98
<b>DEVICES</b>													
245			48" x 96" x 3/4" Telephone Board With Fire Retardant Paint in Weatherproof Box	EA	3	0%	3	0.360	\$ 38.00	\$ 13.68	\$ 62.00	\$ 75.68	\$ 227.04
246			IT Panel	EA	1	0%	1	1.620	\$ 38.00	\$ 61.56	\$ 219.00	\$ 280.56	\$ 280.56
247			Tele/Data Outlet	EA	199	0%	199	0.250	\$ 38.00	\$ 9.50	\$ 22.00	\$ 31.50	\$ 6,268.50
			RJ45 Connector	EA	398	0%	398	0.100	\$ 38.00	\$ 3.80	\$ 4.56	\$ 8.36	\$ 3,327.28
			Back Box	EA	199	0%	199	0.280	\$ 38.00	\$ 10.64	\$ 12.45	\$ 23.09	\$ 4,594.91
			Faceplate	EA	199	0%	199	0.156	\$ 38.00	\$ 5.93	\$ 6.54	\$ 12.47	\$ 2,481.13
248			Data Outlet	EA	3	0%	3	0.250	\$ 38.00	\$ 9.50	\$ 22.00	\$ 31.50	\$ 94.50
			RJ45 Connector	EA	3	0%	3	0.100	\$ 38.00	\$ 3.80	\$ 4.56	\$ 8.36	\$ 25.08
			Back Box	EA	3	0%	3	0.280	\$ 38.00	\$ 10.64	\$ 12.45	\$ 23.09	\$ 69.27
			Faceplate	EA	3	0%	3	0.156	\$ 38.00	\$ 5.93	\$ 6.54	\$ 12.47	\$ 37.40
249			TV Outlet	EA	94	0%	94	0.250	\$ 38.00	\$ 9.50	\$ 22.00	\$ 31.50	\$ 2,961.00
			F Connector	EA	94	0%	94	0.100	\$ 38.00	\$ 3.80	\$ 4.56	\$ 8.36	\$ 785.84
			Back Box	EA	94	0%	94	0.280	\$ 38.00	\$ 10.64	\$ 12.45	\$ 23.09	\$ 2,170.46
			Faceplate	EA	94	0%	94	0.156	\$ 38.00	\$ 5.93	\$ 6.54	\$ 12.47	\$ 1,171.99
<b>LOW VOLTAGE</b>													
<b>CONDUIT</b>													
250			1/2" EMT Conduit	LF	7221	10%	7943	0.047	\$ 38.00	\$ 1.79	\$ 1.39	\$ 3.18	\$ 25,227.22
<b>CONDUCTOR</b>													

E401, E402,  
E403, E404,  
E405, E406, E407  
& E500

**DETAILED BREAKDOWN OF ITEMS**

Prepared for: **Homewood Suites Hotel, 396 SW 42nd Ave In Miami, Florida**  
 Project ID: **16052024**  
 Scope: **Electrical**



Date: **22-May-24**

SR #	Drawing #	Detail #	DESCRIPTION	UNIT	QUANTITY	WASTAGE	QUANTITY W/ WASTAGE	UNIT MANHOUR	HOURLY WAGE	LABOR COST	MAT. COST	UNIT COST	SUB COST
251			#18 CU THHN/THWN	LF	14442	10%	15886	0.005	\$ 38.00	\$ 0.19	\$ 0.09	\$ 0.28	\$ 4,448.12
			<b>DEVICES</b>										
252			Door Bell	EA	77	0%	77	0.580	\$ 38.00	\$ 22.04	\$ 49.00	\$ 71.04	\$ 5,470.08
253			Doorbell ON/OFF Switch	EA	77	0%	77	0.350	\$ 38.00	\$ 13.30	\$ 22.00	\$ 35.30	\$ 2,718.10
			<b>MISCELLANEOUS</b>										
254			Junction Box	EA		0%	0	0.400	\$ 38.00	\$ 15.20	\$ 45.00	\$ 60.20	\$ -
												<b>SUBTOTAL</b>	\$ 346,192

**ELECTRONUC SAFETY AND SECURITY**

<b>FIRE ALARM</b>													
<b>CONDUIT</b>													
255			3/4" EMT Conduit	LF	13738	10%	15112	0.062	\$ 38.00	\$ 2.36	\$ 2.03	\$ 4.39	\$ 66,282.14
256		<b>Length Assumed</b>	1-1/4" EMT Conduit	LF	150	10%	165	0.089	\$ 38.00	\$ 3.38	\$ 7.04	\$ 10.42	\$ 1,719.63
257			2" PVC Schedule With Pull String	LF	240	10%	265	0.089	\$ 38.00	\$ 3.38	\$ 8.92	\$ 12.30	\$ 3,253.95
			<b>CONDUCTOR</b>										
258		<b>Length Assumed</b>	2HR Fire Rated Cable	LF	150	10%	165	0.016	\$ 38.00	\$ 0.61	\$ 18.61	\$ 19.22	\$ 3,170.97
259			#16 CU THHN/THWN	LF	14826	10%	16309	0.006	\$ 38.00	\$ 0.23	\$ 0.15	\$ 0.38	\$ 6,164.67
260			#14 CU THHN/THWN	LF	12650	10%	13915	0.006	\$ 38.00	\$ 0.23	\$ 0.17	\$ 0.40	\$ 5,538.04
			<b>DEVICES</b>										
261		<b>If Required By AHJ</b>	BDA Monitoring	EA	1	0%	1	4.150	\$ 38.00	\$ 157.70	\$ 2,151.00	\$ 2,308.70	\$ 2,308.70
262			Fire Alarm Control Panel	EA	1	0%	1	4.620	\$ 38.00	\$ 175.56	\$ 2,613.00	\$ 2,788.56	\$ 2,788.56
263			Fire Alarm Panel Supervisory	EA	2	0%	2	1.650	\$ 38.00	\$ 62.70	\$ 196.68	\$ 259.38	\$ 518.76
264			Fire Smoke Control Panel	EA	1	0%	1	4.620	\$ 38.00	\$ 175.56	\$ 2,613.00	\$ 2,788.56	\$ 2,788.56
265			Battery Charger UPS	EA	1	0%	1	5.320	\$ 38.00	\$ 202.16	\$ 3,093.95	\$ 3,296.11	\$ 3,296.11
266			BDA Signal Booster	EA	1	0%	1	10.680	\$ 38.00	\$ 405.84	\$ 7,925.00	\$ 8,330.84	\$ 8,330.84
		<b>Provided By Others</b>											
267			CO/NO2 Control Panel	EA	1	0%	1	4.620	\$ 38.00	\$ 175.56	\$ 2,613.00	\$ 2,788.56	\$ 2,788.56
268			Fire Alarm Addressable Carbon Monoxide & Smoke Detector, WP, Model SIGA-SD	EA	73	0%	73	1.620	\$ 38.00	\$ 61.56	\$ 239.00	\$ 300.56	\$ 21,940.88
269			Fire Alarm Addressable Smoke Detector Ceiling Mounted, Model SIGA-SD	EA	187	0%	187	1.620	\$ 38.00	\$ 61.56	\$ 239.00	\$ 300.56	\$ 56,204.72
270			Fire Alarm Addressable Heat Detector	EA	2	0%	2	1.620	\$ 38.00	\$ 61.56	\$ 239.00	\$ 300.56	\$ 601.12
271			Fire Alarm Addressable Heat Detector, WP	EA	8	0%	8	1.620	\$ 38.00	\$ 61.56	\$ 239.00	\$ 300.56	\$ 2,404.48
272			Fire Alarm Control Panel With SPD	EA	1	0%	1	4.620	\$ 38.00	\$ 175.56	\$ 2,613.00	\$ 2,788.56	\$ 2,788.56
273			Fire Alarm Duck Smoke Detector, Model SIGA-SD	EA	3	0%	3	1.620	\$ 38.00	\$ 61.56	\$ 239.00	\$ 300.56	\$ 901.68
274			Fire Alarm Elevator Recall Addressable Smoke Detector Ceiling Mounted	EA	10	0%	10	1.620	\$ 38.00	\$ 61.56	\$ 239.00	\$ 300.56	\$ 3,005.60
275			Fire Alarm Elevator Recall Addressable Smoke Detector Ceiling Mounted, Model SIGA-SD	EA	8	0%	8	1.620	\$ 38.00	\$ 61.56	\$ 239.00	\$ 300.56	\$ 2,404.48
276			Fire Alarm Flashing Strobe Light, 110CD, WP	EA	1	0%	1	1.550	\$ 38.00	\$ 58.90	\$ 199.99	\$ 258.89	\$ 258.89
277			Fire Alarm Flashing Strobe Light, 15CD	EA	24	0%	24	1.550	\$ 38.00	\$ 58.90	\$ 74.96	\$ 133.86	\$ 3,212.64
278			Fire Alarm Flashing Strobe Light, 15CD, WP	EA	4	0%	4	1.550	\$ 38.00	\$ 58.90	\$ 74.96	\$ 133.86	\$ 535.44
279			Fire Alarm Flashing Strobe Light, 30CD	EA	2	0%	2	1.600	\$ 38.00	\$ 60.80	\$ 129.00	\$ 189.80	\$ 379.60
280			Fire Alarm Flashing Strobe Light, 30CD, WP	EA	1	0%	1	1.600	\$ 38.00	\$ 60.80	\$ 129.00	\$ 189.80	\$ 189.80
281			Fire Alarm Horn	EA	138	0%	138	1.580	\$ 38.00	\$ 60.04	\$ 107.63	\$ 167.67	\$ 23,137.77
282			Fire Alarm Magnetic Door Holder	EA	16	0%	16	0.950	\$ 38.00	\$ 36.10	\$ 52.36	\$ 88.46	\$ 1,415.36
283			Fire Alarm Pull Station, WP	EA	6	0%	6	1.100	\$ 38.00	\$ 41.80	\$ 97.54	\$ 139.34	\$ 836.04
284			Fire Alarm Remote Annunciator Panel	EA	1	0%	1	4.620	\$ 38.00	\$ 175.56	\$ 2,613.00	\$ 2,788.56	\$ 2,788.56
285			Fire Alarm Speaker And Flashing Strobe Light	EA	1	0%	1	1.550	\$ 38.00	\$ 58.90	\$ 199.99	\$ 258.89	\$ 258.89
286			Fire Alarm Speaker And Flashing Strobe Light, 110CD, WP	EA	13	0%	13	1.550	\$ 38.00	\$ 58.90	\$ 199.99	\$ 258.89	\$ 3,365.57
287			Fire Alarm Speaker And Flashing Strobe Light, 15CD	EA	107	0%	107	1.550	\$ 38.00	\$ 58.90	\$ 74.96	\$ 133.86	\$ 14,323.02

FA102, FA103,  
 FA104, FA105,  
 FA106, FA107,  
 FA111 & FA200

**DETAILED BREAKDOWN OF ITEMS**

Prepared for: **Homewood Suites Hotel, 396 SW 42nd Ave In Miami, Florida**  
 Project ID: **16052024**  
 Scope: **Electrical**



Date: **22-May-24**

SR #	Drawing #	Detail #	DESCRIPTION	UNIT	QUANTITY	WASTAGE	QUANTITY W/ WASTAGE	UNIT MANHOUR	HOURLY WAGE	LABOR COST	MAT. COST	UNIT COST	SUB COST
288			Fire Alarm Speaker And Flashing Strobe Light, 30CD	EA	9	0%	9	1.600	\$ 38.00	\$ 60.80	\$ 129.00	\$ 189.80	\$ 1,708.20
289			Fire Alarm Speaker And Flashing Strobe Light, 30CD, WP	EA	9	0%	9	1.600	\$ 38.00	\$ 60.80	\$ 129.00	\$ 189.80	\$ 1,708.20
290			Fire Alarm Speaker And Flashing Strobe Light, 75CD	EA	3	0%	3	1.620	\$ 38.00	\$ 61.56	\$ 170.16	\$ 231.72	\$ 695.16
291			Fire Alarm Speaker And Flashing Strobe Light, 75CD, WP	EA	8	0%	8	1.620	\$ 38.00	\$ 61.56	\$ 170.16	\$ 231.72	\$ 1,853.76
292			Fire Alarm Speaker And Flashing Strobe Light, WP	EA	1	0%	1	1.620	\$ 38.00	\$ 61.56	\$ 170.16	\$ 231.72	\$ 231.72
293			Fire Alarm Speaker, 15CD	EA	3	0%	3	1.550	\$ 38.00	\$ 58.90	\$ 74.96	\$ 133.86	\$ 401.58
294			Fire Alarm Tamper Switch	EA	22	0%	22	0.820	\$ 38.00	\$ 31.16	\$ 52.00	\$ 83.16	\$ 1,829.52
295			Fire Alarm Water Flow Switch	EA	23	0%	23	1.220	\$ 38.00	\$ 46.36	\$ 171.79	\$ 218.15	\$ 5,017.45
296			Indoor Antenna	EA	3	0%	3	0.750	\$ 38.00	\$ 28.50	\$ 47.99	\$ 76.49	\$ 229.47
297			Manual Fire Alarm Pull Station	EA	31	0%	31	1.100	\$ 38.00	\$ 41.80	\$ 97.54	\$ 139.34	\$ 4,319.54
298			Manual Fire Alarm Pull Station, WP	EA	2	0%	2	1.100	\$ 38.00	\$ 41.80	\$ 97.54	\$ 139.34	\$ 278.68
299			Motion Detector	EA	4	0%	4	0.880	\$ 38.00	\$ 33.44	\$ 52.00	\$ 85.44	\$ 341.76
300			Smoke & Carbon Monoxide Detector	EA	5	0%	5	1.620	\$ 38.00	\$ 61.56	\$ 239.00	\$ 300.56	\$ 1,502.80
301			Smoke Detector	EA	2	0%	2	1.620	\$ 38.00	\$ 61.56	\$ 239.00	\$ 300.56	\$ 601.12
302			Splitter	EA	6	0%	6	1.220	\$ 38.00	\$ 46.36	\$ 139.95	\$ 186.31	\$ 1,117.86
			<b>MISCELLANEOUS</b>										
303			Junction Box	EA	37	0%	37	0.400	\$ 38.00	\$ 15.20	\$ 45.00	\$ 60.20	\$ 2,227.40
												<b>SUBTOTAL</b>	<b>\$ 273,967</b>

**UTILITIES**

			<b>DISTRIBUTION</b>										
			<b>CONDUIT</b>										
304			4" PVC SCH 40 Conduit	LF	918	10%	1010	0.178	\$ 38.00	\$ 6.76	\$ 16.95	\$ 23.71	\$ 23,946.40
			<b>CONDUCTOR</b>										
305			#350 KCMIL CU THHN/THWN	LF	467	10%	514	0.030	\$ 38.00	\$ 1.14	\$ 8.75	\$ 9.89	\$ 5,080.49
306			#600 KCMIL CU THHN/THWN	LF	3206	10%	3527	0.040	\$ 38.00	\$ 1.52	\$ 15.65	\$ 17.17	\$ 60,551.72
			<b>LUGS</b>										
307			Compression Lug CU With 1-Hole , #350 KCMIL CU Wire	EA	16	0%	16	0.460	\$ 38.00	\$ 17.48	\$ 12.19	\$ 29.67	\$ 474.72
308			Heat Shrink Tubing for #350 KCMIL CU Wire	EA	16	0%	16	0.250	\$ 38.00	\$ 9.50	\$ 0.34	\$ 9.84	\$ 157.44
309			Compression Lug CU With 1-Hole , #600 KCMIL CU Wire	EA	160	0%	160	0.480	\$ 38.00	\$ 18.24	\$ 14.87	\$ 33.11	\$ 5,297.60
310			Heat Shrink Tubing for #600 KCMIL CU Wire	EA	160	0%	160	0.250	\$ 38.00	\$ 9.50	\$ 0.36	\$ 9.86	\$ 1,577.60
			<b>DEVICES</b>										
311			750KVA Pad Mounted Transformer	EA	1	0%	1	55.000	\$ 38.00	\$ 2,090.00	\$158,420.14	\$ 160,510.14	\$ 160,510.14
			Transformer Concrete Pad	EA	1	0%	1	6.800	\$ 38.00	\$ 258.40	\$ 1,150.00	\$ 1,408.40	\$ 1,408.40
312			Utility Meter With CT Cabinet	EA	1	0%	1	12.000	\$ 38.00	\$ 456.00	\$ 8,291.85	\$ 8,747.85	\$ 8,747.85
			Concrete Pedestal For CT Cabinet	EA	1	0%	1	4.500	\$ 38.00	\$ 171.00	\$ 450.00	\$ 621.00	\$ 621.00
			<b>SITE LIGHTING</b>										
			<b>CONDUIT</b>										
313			1" PVC SCH 40 Conduit	LF	846	10%	930	0.06	\$ 38.00	\$ 2.43	\$ 3.66	\$ 6.09	\$ 5,666.67
			<b>CONDUCTOR</b>										
314			#8 CU THHN/THWN	LF	2537	10%	2791	0.009	\$ 38.00	\$ 0.34	\$ 0.56	\$ 0.90	\$ 2,517.07
			<b>LIGHTING FIXTURES</b>										
315			WE: Lighting Fixture, LITHONIA LIGHTING, WPX1 LED P2 30K MVOLT DBLXD Mounting: Wall Mounted Watts: 23.26W	EA	11	0%	11	2.320	\$ 38.00	\$ 88.16	\$ 392.09	\$ 480.25	\$ 5,282.75
316			RA: LED Street Light Fixture, LEOTEK ELECTRONIC LLC GCL1-80J-MV-40K-3R-XX-240 Mounted: Pole Mounted Watts: 160W	EA	6	0%	6	3.620	\$ 38.00	\$ 137.56	\$ 1,392.95	\$ 1,530.51	\$ 9,183.06
317			30' Square Steel Pole	EA	6	0%	6	6.350	\$ 38.00	\$ 241.30	\$ 1,841.00	\$ 2,082.30	\$ 12,493.80

E101

**DETAILED BREAKDOWN OF ITEMS**

Prepared for: **Homewood Suites Hotel, 396 SW 42nd Ave In Miami, Florida**  
 Project ID: **16052024**  
 Scope: **Electrical**



Date: **22-May-24**

SR #	Drawing #	Detail #	DESCRIPTION	UNIT	QUANTITY	WASTAGE	QUANTITY W/ WASTAGE	UNIT MANHOUR	HOURLY WAGE	LABOR COST	MAT. COST	UNIT COST	SUB COST
			Concrete Base	EA	6	0%	6	4.500	\$ 38.00	\$ 171.00	\$ 450.00	\$ 621.00	\$ 3,726.00
			<b>TELECOMMUNICATION</b>										
			<b>CONDUIT</b>										
318			4" PVC SCH 40 Conduit With Pull String	LF	150	10%	165	0.178	\$ 38.00	\$ 6.76	\$ 16.95	\$ 23.71	\$ 3,912.81
			<b>MISCELLANEOUS</b>										
			<b>TRENCHING &amp; BACKFILLING</b>										
319			Excavation & Backfilling (2' Deep x 1' Wide Trench) Including All Labor and Material/Equipment	CFT	1342	0%	1342	0.067	\$ 38.00	\$ 2.55	\$ -	\$ 2.55	\$ 3,416.73
<b>SUBTOTAL</b>												\$	<b>314,572</b>
<b>PROJECTED COST</b>													<b>\$4,155,397</b>
<b>OVERHEAD AND PROFIT</b>												15%	<b>\$623,310</b>
<b>INSURANCE</b>												3%	<b>\$124,662</b>
<b>CONTINGENCY</b>												5%	<b>\$207,770</b>
<b>TAX</b>												7%	<b>\$215,361</b>
<b>SUGGESTED BID</b>													<b>\$5,326,499</b>



**DETAILED BREAKDOWN OF ITEMS**

Prepared for: **Homewood Suites Hotel, 396 SW 42nd Ave In Miami, Florida**  
 Project ID: **16052024**  
 Scope: **Electrical**



Date: **22-May-24**

SR #	Drawing #	Detail #	DESCRIPTION	UNIT	QUANTITY	WASTAGE	QUANTITY W/ WASTAGE
<b>GENERAL REQUIREMENTS</b>							
1			Permits	LS	1	0%	1
2			Supervision and Coordination	LS	1	0%	1
3			Submittals and Shop drawings	LS	1	0%	1
4			Final Cleaning	LS	1	0%	1
5			Mobilization Costs	LS	1	0%	1
6			Temporary Control & Facilities	LS	1	0%	1
7			Scaffolding	LS	1	0%	1

**ELECTRICAL**

			DISTRIBUTION				
			<b>CONDUIT</b>				
8			2" EMT Conduit	LF	1025.7	10%	1128
9			3" EMT Conduit	LF	10.6	10%	12
10			4" EMT Conduit	LF	601	10%	661
			<b>CONDUCTOR</b>				
11			#6 CU THHN/THWN	LF	51.285	10%	56
12			#4 CU THHN/THWN	LF	0.53	10%	1
13			#3 CU THHN/THWN	LF	5.11	10%	6
14			#1 CU THHN/THWN	LF	205.135	10%	226
15			#1/0 CU THHN/THWN	LF	24.94	10%	27
16			#250 KCMIL CU THHN/THWN	LF	2.13	10%	2
17			#350 KCMIL CU THHN/THWN	LF	15.955	10%	18
18			#600 KCMIL CU THHN/THWN	LF	104.245	10%	115
			<b>LUGS</b>				
19			Compression Lug CU With 1-Hole , #6 CU Wire	EA	248	0%	248
			Heat Shrink Tubing for #6 CU Wire	EA	248	0%	248
20			Compression Lug CU With 1-Hole , #4 CU Wire	EA	2	0%	2
			Heat Shrink Tubing for #4 CU Wire	EA	2	0%	2
21			Compression Lug CU With 1-Hole , #3 CU Wire	EA	24	0%	24
			Heat Shrink Tubing for #3 CU Wire	EA	24	0%	24
22			Compression Lug CU With 1-Hole , #1 CU Wire	EA	992	0%	992
			Heat Shrink Tubing for #1 CU Wire	EA	992	0%	992
23			Compression Lug CU With 1-Hole , #1/0 CU Wire	EA	92	0%	92
			Heat Shrink Tubing for #1/0 CU Wire	EA	92	0%	92
24			Compression Lug CU With 1-Hole , #250 KCMIL CU Wire	EA	8	0%	8
			Heat Shrink Tubing for #250 KCMIL CU Wire	EA	8	0%	8
25			Compression Lug CU With 1-Hole , #350 KCMIL CU Wire	EA	80	0%	80
			Heat Shrink Tubing for #350 KCMIL CU Wire	EA	80	0%	80
26			Compression Lug CU With 1-Hole , #600 KCMIL CU Wire	EA	384	0%	384
			Heat Shrink Tubing for #600 KCMIL CU Wire	EA	384	0%	384
			<b>CIRCUIT BREAKER</b>				
27			1P/15A Breaker	EA	5	0%	5
28			1P/20A Breaker	EA	149	0%	149
29			1P/20A AFCI Breaker	EA	490	0%	490
30			1P/20A AFCI/GFCI Breaker	EA	340	0%	340
31			1P/20A AFCI/GFCI Dual Circuit Breaker	EA	58	0%	58
32			2P/15A Breaker	EA	98	0%	98
33			2P/20A Breaker	EA	4	0%	4
34			2P/25A Breaker	EA	10	0%	10
35			2P/30A Breaker	EA	6	0%	6
36			2P/35A Breaker	EA	10	0%	10
37			2P/40A Breaker	EA	1	0%	1
38			2P/45A Breaker	EA	1	0%	1
39			2P/50A Breaker	EA	103	0%	103
40			2P/60A Breaker	EA	7	0%	7
41			2P/80 Breaker	EA	7	0%	7
42			2P/125A Electronic Type With Adjustable Trip Breaker	EA	4	0%	4
43			2P/125A GFCI Breaker	EA	124	0%	124
44			3P/20A Breaker	EA	20	0%	20
45			3P/30A Breaker	EA	1	0%	1

**DETAILED BREAKDOWN OF ITEMS**

Prepared for: **Homewood Suites Hotel, 396 SW 42nd Ave In Miami, Florida**  
 Project ID: **16052024**  
 Scope: **Electrical**



Date: **22-May-24**

SR #	Drawing #	Detail #	DESCRIPTION	UNIT	QUANTITY	WASTAGE	QUANTITY W/ WASTAGE
46			3P/40A Breaker	EA	3	0%	3
47			3P/40A Breaker	EA	1	0%	1
48			3P/50A Breaker	EA	1	0%	1
49			3P/100A Breaker	EA	2	0%	2
50			3P/100A Electronic Type With Adjustable Trip Breaker	EA	1	0%	1
51			3P/150A Electronic Type With Adjustable Trip Breaker	EA	1	0%	1
52			3P/250A Breaker	EA	1	0%	1
53			3P/400A Breaker	EA	4	0%	4
54			3P/600A Breaker	EA	2	0%	2
55			3P/400A Electronic Type With Adjustable Trip Breaker	EA	6	0%	6
56			3P/800A Electronic Type With Adjustable Trip Breaker	EA	9	0%	9
57			3P/800A MCB	EA	1	0%	1
58			3P/1600A MCB Breaker	EA	1	0%	1
59			3P/4000A MCB (Main 1/2)-With DAS	EA	1	0%	1
60			3P/4000A MCB (Main 2/2)-With DAS	EA	1	0%	1
			<b>PANEL</b>				
61		<b>Provided By Others</b>	Panel P: 400A, 120/208V, 3Ph, 4W, Mains: MLO, NEMA 4X	EA	1	0%	1
62			Panel: CO/NO2 Control Panel	EA	1	0%	1
63			Panel K1: 150A, 120/208V, 1Ph, 3W, Mains: MLO, 30 Poles, Flush M	EA	49	0%	49
64			Panel K2: 150A, 120/208V, 1Ph, 3W, Mains: MLO, 30 Poles, Flush M	EA	31	0%	31
65			Panel K3: 150A, 120/208V, 1Ph, 3W, Mains: MLO, 30 Poles, Flush M	EA	4	0%	4
66			Panel K4: 150A, 120/208V, 1Ph, 3W, Mains: MLO, 30 Poles, Flush M	EA	1	0%	1
67			Panel Q1: 150A, 120/208V, 1Ph, 3W, Mains: MLO, 30 Poles, Flush M	EA	4	0%	4
68			Panel Q2: 150A, 120/208V, 1Ph, 3W, Mains: MLO, 30 Poles, Flush M	EA	8	0%	8
69			Panel Q3: 150A, 120/208V, 1Ph, 3W, Mains: MLO, 30 Poles, Flush M	EA	1	0%	1
70			Panel 4N: 800A, 120/208V, 3Ph, 4W, Mains: MLO, 52P, SIEMENS, S	EA	1	0%	1
71			Panel 5N: 800A, 120/208V, 3Ph, 4W, Mains: MLO, 54P, SIEMENS, S	EA	1	0%	1
72			Panel 6N: 800A, 120/208V, 3Ph, 4W, Mains: MLO, 65KAIC, 42P, SIE	EA	1	0%	1
73			Panel 7N: 800A, 120/208V, 3Ph, 4W, Mains: MLO, 65KAIC, 42P, SIE	EA	1	0%	1
74			Panel 8N: 800A, 120/208V, 3Ph, 4W, Mains: MLO, 65AKIC, 42P, SIE	EA	1	0%	1
75			Panel 9N: 800A, 120/208V, 3Ph, 4W, Mains: MLO, 65AKIC, 42P, SIE	EA	1	0%	1
76			Panel 10N: 800A, 120/208V, 3Ph, 4W, Mains: MLO, 65AKIC, 42P, SI	EA	1	0%	1
77			Panel EL1: 400A, 120/208V, 3Ph, 4W, Mains: MLO, 42P, SIEMENS, S	EA	1	0%	1
78			Panel EL2: 400A, 120/208V, 3Ph, 4W, Mains: MLO, 42P, SIEMENS, S	EA	1	0%	1
79			Panel EV: 800A, 120/208V, 3Ph, 4W, Mains: MCB, 42P, SIEMENS, M	EA	1	0%	1
80			Panel F: 400A, 120/208V, 3Ph, 4W, Mains: MLO, 42P, SIEMENS, Sur	EA	1	0%	1
81			Panel IT: 250A, 120/208V, 3Ph, 4W, Mains: MLO, 65KAIC, 30P, SIE	EA	1	0%	1
82			Panel K: 400A, 120/208V, 3Ph, 4W, Mains: MLO, 42P, SIEMENS, Sur	EA	1	0%	1
83			Panel MDP1: 4000A, 120/208V, 3PH, 4W, Mains: MCB, 20P, SIEME	EA	1	0%	1
84			Panel MDP2: 4000A, 120/208V, 3PH, 4W, Mains: MCB, 20P, SIEME	EA	1	0%	1
85			Panel N1/2: 400A, 120/208V, 3Ph, 4W, Mains: MLO, 42P, SIEMENS,	EA	1	0%	1
86			Panel N2/2: 400A, 120/208V, 3Ph, 4W, Mains: MLO, 42P, SIEMENS,	EA	1	0%	1
87			Panel NR: 400A, 120/208V, 3Ph, 4W, Mains: MLO, 84P, SIEMENS, S	EA	1	0%	1
88			Panel SBG1: 400A, 120/208V, 3Ph, 4W, Mains: MLO, 42P, SIEMENS	EA	1	0%	1
89			Panel SBG: 1600A, 120/208V, 3Ph, 4W, Mains: MLO, 42P, SIEMENS	EA	1	0%	1
90			Panel SBR: 600A, 120/208V, 3Ph, 4W, Mains: MLO, 42P, SIEMENS,	EA	1	0%	1
			<b>DEVICES</b>				
91		<b>Provided By Fire Pump Contractor</b>	150HP Jockey Fire Pump Controller With Soft Starter	EA	1	0%	1
			2" Concrete Envelope	EA	1	0%	1
92			3P/1600A, 120/208V, 3Ph Automatic Transfer Switch, NEMA 3R	EA	1	0%	1
93			3P/400A, 120/208V, 3Ph Automatic Transfer Switch, NEMA 3R	EA	1	0%	1
94			3P/400A, 120/208V, 3Ph Manual Transfer Switch, NEMA 3R	EA	1	0%	1
95			3P/600A, 120/208V Manual Transfer Switch, NEMA 3R	EA	1	0%	1
96			750KVA, 120/208V, 3Ph, 4W Stand-By Diesel Generator, MTU12V16	EA	1	0%	1
97			ATS Remote Annunciator Panel	EA	1	0%	1
98			Concrete Pad	EA	1	0%	1
99		<b>Detail Not Given</b>	EPO	EA	3	0%	3
100			Generator Annunciator Panel	EA	1	0%	1
101			Generator/ATS Fire Alarm Monitor Device	EA	1	0%	1
102			House Keeping Concrete Pad	EA	2	0%	2
103		<b>Provided By Fire Pump Contractor</b>	Service Rated Fire Pump ATS	EA	1	0%	1
104			Temporary Generator Docking Station, NEMA 3R	EA	1	0%	1
105			SPD	EA	121	0%	121

**DETAILED BREAKDOWN OF ITEMS**

Prepared for: **Homewood Suites Hotel, 396 SW 42nd Ave In Miami, Florida**  
 Project ID: **16052024**  
 Scope: **Electrical**



Date: **22-May-24**

SR #	Drawing #	Detail #	DESCRIPTION	UNIT	QUANTITY	WASTAGE	QUANTITY W/ WASTAGE	
			<b>DISCONNECT SWITCH</b>					
106	E102, E103, E104, E105, E106, E107, E111, E201, E202, E203, E204, E205, E206 E302, E303, E306, E401, E402, E403, E404, E405, E406, E407 & E500	Rating Assumed	1P/20A Fused Disconnect Switch, WP, NEMA 1	EA	6	0%	6	
107		Rating Assumed	2P/15A Disconnect Switch, NEMA 1	EA	71	0%	71	
108		Rating Assumed From Panel	2P/15A Disconnect Switch, WP, NEMA 1	EA	1	0%	1	
109			Rating Assumed	2P/20A Disconnect Switch, NEMA 1	EA	1	0%	1
110			Rating Assumed	2P/20A Disconnect Switch, NEMA 1	EA	1	0%	1
111				2P/20A Disconnect Switch, WP, NEMA 1	EA	1	0%	1
112			Rating Assumed	2P/20A Disconnect Switch, WP, NEMA 1	EA	1	0%	1
113				2P/25A Disconnect Switch, NEMA 1	EA	9	0%	9
114				2P/25A Disconnect Switch, WP, NEMA 3R	EA	2	0%	2
115				2P/30A Disconnect Switch, NEMA 1	EA	2	0%	2
116				2P/30A Disconnect Switch, WP, NEMA 1	EA	1	0%	1
117				2P/35A Disconnect Switch, NEMA 1	EA	6	0%	6
118				2P/35A Disconnect Switch, WP, NEMA 3R	EA	3	0%	3
119				2P/40A Disconnect Switch, WP, NEMA 3R	EA	1	0%	1
120			Rating Assumed From Panel	2P/45A Disconnect Switch, WP, NEMA 1	EA	1	0%	1
121				2P/50A Disconnect Switch, WP, NEMA 3R	EA	5	0%	5
122				2P/60A Disconnect Switch, NEMA 1	EA	9	0%	9
123				2P/60A Disconnect Switch, WP, NEMA 3R	EA	1	0%	1
124				3P/100A Disconnect Switch, WP, NEMA 3R	EA	2	0%	2
125				3P/100AF/100AT Disconnect Switch, WP, NEMA 1	EA	1	0%	1
126				3P/20A Disconnect Switch, NEMA 1	EA	3	0%	3
127			Rating Assumed	3P/20A Disconnect Switch, NEMA 1	EA	1	0%	1
128			Rating Assumed From Panel	3P/20A Disconnect Switch, WP, NEMA 1	EA	16	0%	16
129			Rating Assumed	3P/20A Disconnect Switch, WP, NEMA 1	EA	1	0%	1
130			Rating Assumed	3P/20A Disconnect Switch, WP, NEMA 3R	EA	16	0%	16
131			Rating Assumed From Panel	3P/30A Disconnect Switch, NEMA 1	EA	1	0%	1
132			Rating Assumed	3P/30A Disconnect Switch, NEMA 1	EA	1	0%	1
133				3P/400AF/350AT Disconnect Switch, WP, NEMA 3R (Rating Assumed)	EA	1	0%	1
134			Rating Assumed From Panel	3P/40A Disconnect Switch, WP, NEMA 1	EA	3	0%	3
135				3P/40A Disconnect Switch, WP, NEMA 3R	EA	1	0%	1
136				3P/50A Disconnect Switch, WP, NEMA 3R	EA	1	0%	1
				<b>GROUNDING</b>				
137				5/8" x 10' CU Clad Ground Rod	EA	2	0%	2
138				Ground Busbar	EA	4	0%	4
139				1/2" x 20' Concrete Encased Electrode	EA	1	0%	1
140				#6 CU Grounding Conductor	LF	0.2	10%	0
141			#4 CU Grounding Conductor	LF	0.1	10%	0	
142			3/0 CU Grounding Conductor	LF	1	10%	1	
			<b>POWER</b>					
			<b>CONDUIT</b>					
143			1/2" EMT Conduit	LF	4393	10%	4833	
144			3/4" EMT Conduit	LF	287	10%	316	
145			1" EMT Conduit With Pull String	LF	68	10%	75	
146			1" EMT Conduit	LF	225	10%	247	
147			1-1/4" EMT Conduit	LF	44	10%	49	
148			1-1/2" EMT Conduit	LF	86	10%	94	
149			2" EMT Conduit	LF	24	10%	27	
150			4" EMT Conduit	LF	25	10%	28	
151			1/2" RGS Conduit	LF	18	10%	20	
152			3/4" RGS Conduit	LF	4	10%	4	
153			1" RGS Conduit	LF	2	10%	2	
154			4" RGS Conduit	LF	1	10%	1	
			<b>CONDUCTOR</b>					
155			#12 CU THHN/THWN	LF	712	10%	783	
156			#10 CU THHN/THWN	LF	40	10%	44	
157			#8 CU THHN/THWN	LF	30	10%	33	
158			#6 CU THHN/THWN	LF	34	10%	38	
159			#3 CU THHN/THWN	LF	10	10%	11	
160			#2 CU THHN/THWN	LF	17	10%	19	
161			#1/0 CU THHN/THWN	LF	5	10%	5	
162			#600 KCMIL CU THHN/THWN	LF	5	10%	6	
			<b>DEVICE</b>					

**DETAILED BREAKDOWN OF ITEMS**

Prepared for: **Homewood Suites Hotel, 396 SW 42nd Ave In Miami, Florida**  
 Project ID: **16052024**  
 Scope: **Electrical**



Date: **22-May-24**

SR #	Drawing #	Detail #	DESCRIPTION	UNIT	QUANTITY	WASTAGE	QUANTITY W/ WASTAGE
163			30A Special Purpose Receptacle	EA	5	0%	5
164			50A Special Purpose Receptacle	EA	77	0%	77
165			Double Duplex Receptacle	EA	63	0%	63
166			Double Duplex Receptacle, GFCI, Above Counter	EA	37	0%	37
167			Duplex Receptacle	EA	555	0%	555
168			Duplex Receptacle , GFCI	EA	64	0%	64
169			Duplex Receptacle , GFCI, WP	EA	56	0%	56
170			Duplex Receptacle With USB Port	EA	6	0%	6
171			Duplex Receptacle, GFCI	EA	197	0%	197
172			Duplex Receptacle, GFCI, Above Counter	EA	18	0%	18
173			Duplex Receptacle, USB	EA	63	0%	63
174			Exhaust Fan Connection	EA	5	0%	5
175			Quad Receptacle	EA	126	0%	126
176			Shunt Trip Push Button	EA	2	0%	2
177			Single Pole Switch	EA	264	0%	264
178			Single Pole Switch, WP	EA	4	0%	4
179			Single Receptacle	EA	325	0%	325
180			Single Receptacle, WP	EA	3	0%	3
181			Thermostat	EA	1	0%	1
			<b>LIGHTING</b>				
			<b>CONDUIT</b>				
182			1/2" EMT Conduit	LF	834	10%	917
183			3/4" EMT Conduit	LF	624	10%	687
184			1" EMT Conduit	LF	546	10%	601
			<b>CONDUCTOR</b>				
185		Length Assumed	#22 CHX-PCBL-3465 PLENUM	LF	5	10%	5
186			#12 CU THHN/THWN	LF	122	10%	134
187			#10 CU THHN/THWN	LF	89	10%	98
188			#8 CU THHN/THWN	LF	82	10%	90
			<b>LIGHTING FIXTURES</b>				
189		Detail/Schedule Not Given	14" Dia LED Down Light	EA	100	0%	100
190			5" Dia LED Down Light	EA	443	0%	443
191			6" Dia LED Down Light	EA	9	0%	9
192			Elevator Pit Light	EA	14	0%	14
193			12" Downlight Fixture	EA	16	0%	16
194			4' LED Light Fixture	EA	36	0%	36
195			A: LITHONIA LIGHTING STAK 2x2 4000LM 90CRI 35K COL MIN	EA	3	0%	3
196			A1: Emergency, LITHONIA LIGHTING STAK 2x2 4000LM 90CRI 35	EA	1	0%	1
197			B: LITHONIA LIGHTING STAK 2x2 5000LM 90CRI 35K COL MIN	EA	25	0%	25
198			B1: Emergency, LITHONIA LIGHTING STAK 2x2 5000LM 90CRI 35K COL MIN10 ZT MVOLT Mounting: Recessed Mounted Watts: 41.9	EA	15	0%	15
199			Exit Light Wall Mounted	EA	1	0%	1
200			F-CTM1: KUZCO LIGHTING FM43920-WH/WTMounting: CEILING	EA	4	0%	4
201			F-CTM1E : Emergency, KUZCO LIGHTING FM43920-WH/WT Mounting: CEILING SURFACE Watts: 41.6	EA	8	0%	8
202		J: LITHONIA LIGHTING, CSV T L48 5000LM MVOLT 3500K Mount	EA	14	0%	14	
203		J1: LED Lighting Fixture, FOCAL POINT LLC FSM2LWLS FL 625L	EA	17	0%	17	
204		J1E: LED Lighting Fixture With Emergency Battery Backup, FOCAL P	EA	22	0%	22	
205		JE: LITHONIA LIGHTING, CSV T L48 5000LM MVOLT 3500K 80CRI	EA	28	0%	28	
206		K: LITHONIA LIGHTING CSV T L48 4000LM MVOLT 30K 80CRI S	EA	6	0%	6	
207		LF: LED Strip Light Fixture, Surface Or Pendant Mounted Fluorescent	EA	13	0%	13	
208		M: LITHONIA LIGHTING ZL 1N L48 4000LM MVOLT 80CRI 30K V	EA	22	0%	22	
209		M1: LED Lighting Fixture, LITHONIA LIGHTING ZL 1N L48 5000LM	EA	12	0%	12	
210		N: OXYGEN LIGHTING 3 511 24Mounting: WALL SURFACE Watts:	EA	119	0%	119	
211		NE: Emergency OXYGEN LIGHTING 3 511 24 Mounting: WALL SURFACE Watts: 10.4	EA	35	0%	35	
212		NL1: 2x 4' LED Lighting Fixture	EA	1	0%	1	
213		RA: JUNO LIGHTING JPDZ4 SQDC ALO10 SWW5WD 90CRI JPDZ	EA	127	0%	127	
214		RA1: Emergency JUNO LIGHTING JPDZ4 SQDC ALO10 SWW5WD 90CRI JPDZ4RDNCMP 120 FRPC WWH Mounting: Recessed Watts: 15	EA	129	0%	129	
215		RB: JUNO LIGHTING JPDZ4 SQDC ALO10 SWW5WD 90CRI JPDZ	EA	4	0%	4	
216		RC: JUNO LIGHTING JPDZ4 WW SQDC ALO10 SWW5WD 90CRI	EA	27	0%	27	



**DETAILED BREAKDOWN OF ITEMS**

Prepared for: **Homewood Suites Hotel, 396 SW 42nd Ave In Miami, Florida**  
 Project ID: **16052024**  
 Scope: **Electrical**



Date: **22-May-24**

SR #	Drawing #	Detail #	DESCRIPTION	UNIT	QUANTITY	WASTAGE	QUANTITY W/ WASTAGE
217			RC1: Emergency JUNO LIGHTING JPDZ4 WW SQDC ALO10 SWW5WD 90CRI JPDZ4RDNCMP 120 FRPC WWH Mounting: Recessed Watts: 15	EA	2	0%	2
218			RE: JUNO LIGHTING JPDZ4 SQDC ALO10 SWW5WD 90CRI JPDZ4	EA	5	0%	5
219			RE1: Emergency JUNO LIGHTING JPDZ4 SQDC ALO10 SWW5WD 90CRI JPDZ4RDNCMP 120 FRPC WWH Mounting: Recessed Watts: 15	EA	3	0%	3
220			RF1: Emergency FOCAL PAINT. LLC FSM2PR FHX FL2 375LF 30K 1CUNV LD1 TF WH X' Mounting: Recessed Watts: 17.5	EA	6	0%	6
221			RG: Lighting Fixture, PINNACLE ARCHITECTURAL LIGHTING, LF	EA	2	0%	2
222			RG1: Lighting Fixture, PINNACLE ARCHITECTURAL LIGHTING, LF	EA	2	0%	2
223			W: Lighting Fixture, LITHONIA LIGHTING, WPX1 LED P2 30K MV	EA	3	0%	3
224			WE: Lighting Fixture, LITHONIA LIGHTING, WPX1 LED P2 30K MV	EA	5	0%	5
225			XSDE: Lighting Fixture, TARGETTI, LUC F2 L3 T4 30 BT MG 11.5 H	EA	2	0%	2
226			Z: Lighting Fixture, Focal Point, LLC, FSM4L FL 625LF 35K 1C UNV	EA	2	0%	2
227			Z1: Lighting Fixture, Focal Point, LLC, FSM4L FL 625LF 35K 1C UNV	EA	2	0%	2
			<b>LIGHTING CONTROL</b>				
228			Master Switch	EA	77	0%	77
229			Relay Panel	EA	27	0%	27
230			Occupancy Sensor	EA	11	0%	11
231			Single Pole Switch	EA	424	0%	424
232			Single Pole Wall Mounted Occupancy Sensor	EA	25	0%	25
233			Three-Way Toggle Switch	EA	4	0%	4
234			LUTRON CONTROL MODULE, MQSE-2S1-D	EA	1	0%	1
			8"x8"-ENC, LUT-8x8-ENC	EA	1	0%	1
235			SENSOR MODULE, QSM2-XW-C	EA	1	0%	1
			<b>MISCELLANEOUS</b>				
236			Junction Box	EA	212	0%	212
237			Junction Box, WP	EA	7	0%	7

**COMMUNICATION**

TELECOMMUNICATION							
CONDUIT							
238			3/4" EMT Conduit Upto Ceiling	LF	68	10%	74
239			1" EMT Conduit	LF	2420	10%	2662
240			1" EMT Conduit Upto Ceiling	LF	17	10%	18
241			4" EMT Conduit With Pull String	LF	99	10%	109
			<b>CONDUCTOR</b>				
242			CAT6 Cable	LF	125	10%	137
243			Coaxial Cable	LF	78	10%	86
			<b>J-HOOKS</b>				
244			2" J-Hooks	EA	478	0%	478
			<b>DEVICES</b>				
245			48" x 96" x 3/4" Telephone Board With Fire Retardant Paint in Weather	EA	3	0%	3
246			IT Panel	EA	1	0%	1
247			Tele/Data Outlet	EA	199	0%	199
			RJ45 Connector	EA	398	0%	398
			Back Box	EA	199	0%	199
			Faceplate	EA	199	0%	199
248	E401, E402, E403, E404, E405, E406, E407 & E500		Data Outlet	EA	3	0%	3
			RJ45 Connector	EA	3	0%	3
			Back Box	EA	3	0%	3
			Faceplate	EA	3	0%	3
249			TV Outlet	EA	94	0%	94
			F Connector	EA	94	0%	94
			Back Box	EA	94	0%	94
			Faceplate	EA	94	0%	94
			<b>LOW VOLTAGE</b>				
			<b>CONDUIT</b>				
250			1/2" EMT Conduit	LF	722	10%	794
			<b>CONDUCTOR</b>				
251			#18 CU THHN/THWN	LF	72	10%	79

**DETAILED BREAKDOWN OF ITEMS**

Prepared for: **Homewood Suites Hotel, 396 SW 42nd Ave In Miami, Florida**  
 Project ID: **16052024**  
 Scope: **Electrical**



Date: **22-May-24**

SR #	Drawing #	Detail #	DESCRIPTION	UNIT	QUANTITY	WASTAGE	QUANTITY W/ WASTAGE
			<b>DEVICES</b>				
252			Door Bell	EA	77	0%	77
253			Doorbell ON/OFF Switch	EA	77	0%	77
			<b>MISCELLANEOUS</b>				
254			Junction Box	EA		0%	0

**ELECTRONUC SAFETY AND SECURITY**

<b>FIRE ALARM</b>							
			<b>CONDUIT</b>				
255			3/4" EMT Conduit	LF	1374	10%	1511
256		Length Assumed	1-1/4" EMT Conduit	LF	15	10%	17
257			2" PVC Schedule With Pull String	LF	24	10%	26
			<b>CONDUCTOR</b>				
258		Length Assumed	2HR Fire Rated Cable	LF	1	10%	1
259			#16 CU THHN/THWN	LF	74	10%	82
260			#14 CU THHN/THWN	LF	63	10%	70
			<b>DEVICES</b>				
261		If Required By AHJ	BDA Monitoring	EA	1	0%	1
262			Fire Alarm Control Panel	EA	1	0%	1
263			Fire Alarm Panel Supervisory	EA	2	0%	2
264			Fire Smoke Control Panel	EA	1	0%	1
265			Battery Charger UPS	EA	1	0%	1
266			BDA Signal Booster	EA	1	0%	1
		Provided By Others	CO/NO2 Control Panel	EA	1	0%	1
268			Fire Alarm Addressable Carbon Monoxide & Smoke Detector, WP, Mo	EA	73	0%	73
269			Fire Alarm Addressable Smoke Detector Ceiling Mounted, Model SIGA	EA	187	0%	187
270			Fire Alarm Addressable Heat Detector	EA	2	0%	2
271			Fire Alarm Addressable Heat Detector, WP	EA	8	0%	8
272			Fire Alarm Control Panel With SPD	EA	1	0%	1
273			Fire Alarm Duck Smoke Detector, Model SIGA-SD	EA	3	0%	3
274			Fire Alarm Elevator Recall Addressable Smoke Detector Ceiling Mount	EA	10	0%	10
275			Fire Alarm Elevator Recall Addressable Smoke Detector Ceiling Mount	EA	8	0%	8
276	FA102, FA103, FA104, FA105, FA106, FA107, FA111 & FA200		Fire Alarm Flashing Strobe Light, 110CD, WP	EA	1	0%	1
277			Fire Alarm Flashing Strobe Light, 15CD	EA	24	0%	24
278			Fire Alarm Flashing Strobe Light, 15CD, WP	EA	4	0%	4
279			Fire Alarm Flashing Strobe Light, 30CD	EA	2	0%	2
280			Fire Alarm Flashing Strobe Light, 30CD, WP	EA	1	0%	1
281			Fire Alarm Horn	EA	138	0%	138
282			Fire Alarm Magnetic Door Holder	EA	16	0%	16
283			Fire Alarm Pull Station, WP	EA	6	0%	6
284			Fire Alarm Remote Annunciator Panel	EA	1	0%	1
285			Fire Alarm Speaker And Flashing Strobe Light	EA	1	0%	1
286			Fire Alarm Speaker And Flashing Strobe Light, 110CD, WP	EA	13	0%	13
287			Fire Alarm Speaker And Flashing Strobe Light, 15CD	EA	107	0%	107
288			Fire Alarm Speaker And Flashing Strobe Light, 30CD	EA	9	0%	9
289			Fire Alarm Speaker And Flashing Strobe Light, 30CD, WP	EA	9	0%	9
290			Fire Alarm Speaker And Flashing Strobe Light, 75CD	EA	3	0%	3
291			Fire Alarm Speaker And Flashing Strobe Light, 75CD, WP	EA	8	0%	8
292			Fire Alarm Speaker And Flashing Strobe Light, WP	EA	1	0%	1
293			Fire Alarm Speaker, 15CD	EA	3	0%	3
294			Fire Alarm Tamper Switch	EA	22	0%	22
295			Fire Alarm Water Flow Switch	EA	23	0%	23
296			Indoor Antenna	EA	3	0%	3
297			Manual Fire Alarm Pull Station	EA	31	0%	31
298			Manual Fire Alarm Pull Station, WP	EA	2	0%	2
299			Motion Detector	EA	4	0%	4
300			Smoke & Carbon Monoxide Detector	EA	5	0%	5
301			Smoke Detector	EA	2	0%	2
302			Splitter	EA	6	0%	6
			<b>MISCELLANEOUS</b>				
303			Junction Box	EA	37	0%	37

**UTILITIES**

**DETAILED BREAKDOWN OF ITEMS**

Prepared for: **Homewood Suites Hotel, 396 SW 42nd Ave In Miami, Florida**  
 Project ID: **16052024**  
 Scope: **Electrical**



Date: **22-May-24**

SR #	Drawing #	Detail #	DESCRIPTION	UNIT	QUANTITY	WASTAGE	QUANTITY W/ WASTAGE	
<b>DISTRIBUTION</b>								
<b>CONDUIT</b>								
304	E101		4" PVC SCH 40 Conduit	LF	91.8	10%	101	
<b>CONDUCTOR</b>								
305			#350 KCMIL CU THHN/THWN	LF	2,335	10%	3	
306			#600 KCMIL CU THHN/THWN	LF	16.03	10%	18	
<b>LUGS</b>								
307			Compression Lug CU With 1-Hole , #350 KCMIL CU Wire	EA	16	0%	16	
308			Heat Shrink Tubing for #350 KCMIL CU Wire	EA	16	0%	16	
309			Compression Lug CU With 1-Hole , #600 KCMIL CU Wire	EA	160	0%	160	
310			Heat Shrink Tubing for #600 KCMIL CU Wire	EA	160	0%	160	
<b>DEVICES</b>								
311			750KVA Pad Mounted Transformer	EA	1	0%	1	
			Transformer Concrete Pad	EA	1	0%	1	
312			Utility Meter With CT Cabinet	EA	1	0%	1	
			Concrete Pedestal For CT Cabinet	EA	1	0%	1	
<b>SITE LIGHTING</b>								
<b>CONDUIT</b>								
313			1" PVC SCH 40 Conduit	LF	85	10%	93	
<b>CONDUCTOR</b>								
314			#8 CU THHN/THWN	LF	13	10%	14	
<b>LIGHTING FIXTURES</b>								
315		WE: Lighting Fixture, LITHONIA LIGHTING, WPX1 LED P2 30K M	EA	11	0%	11		
316		RA: LED Street Light Fixture, LEOTEK ELECTRONIC LLC GCL1-80	EA	6	0%	6		
317		30' Square Steel Pole	EA	6	0%	6		
318		Concrete Base	EA	6	0%	6		
<b>TELECOMMUNICATION</b>								
<b>CONDUIT</b>								
319		4" PVC SCH 40 Conduit With Pull String	LF	15	10%	17		
<b>MISCELLANEOUS</b>								
<b>TRENCHING &amp; BACKFILLING</b>								
320		Excavation & Backfilling (2' Deep x 1' Wide Trench) Including All Labor and Material/Equipment	CFT	1342	0%	1342		

**PROJECTED COST**

<b>OVERHEAD AND PROFIT</b>
<b>INSURANCE</b>
<b>CONTINGENCY</b>
<b>TAX</b>
<b>SUGGESTED BID</b>

**Notes:**

- Online sources are used for pricing.
- Prices can vary depending upon field conditions.